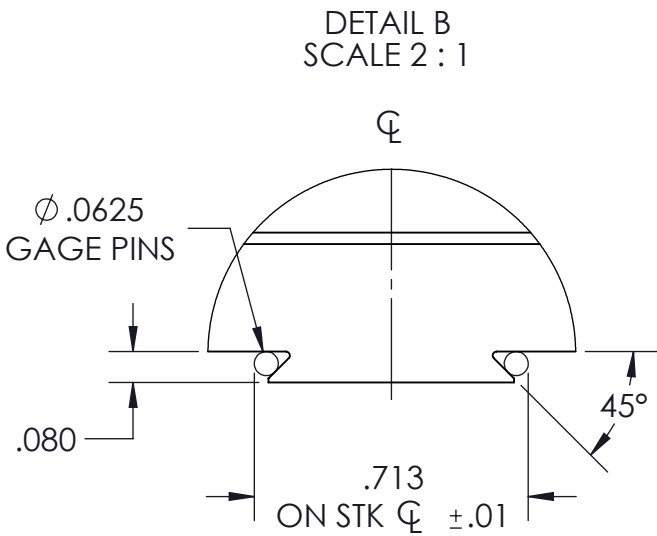
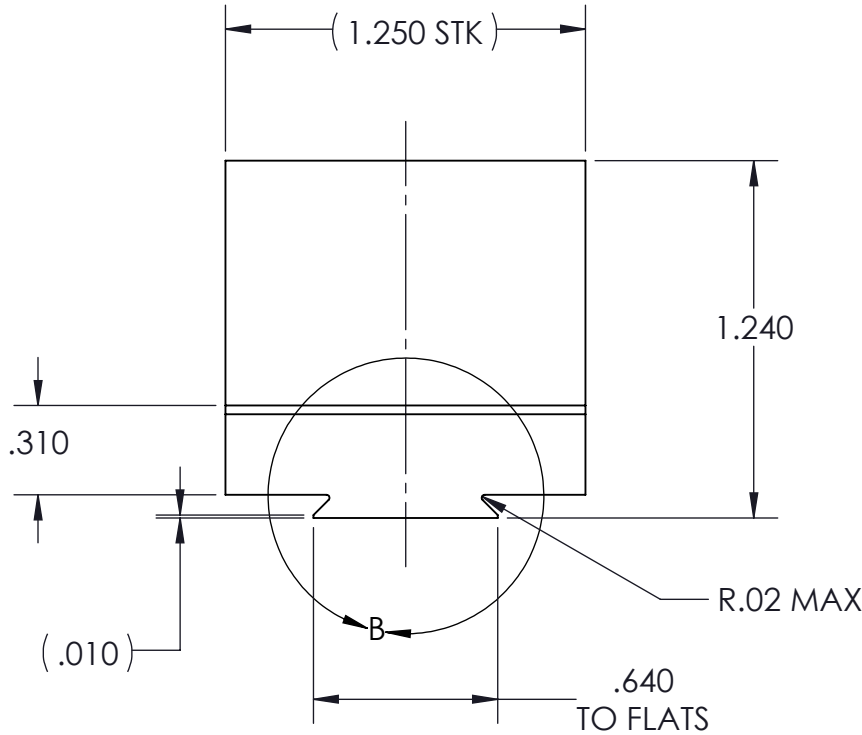
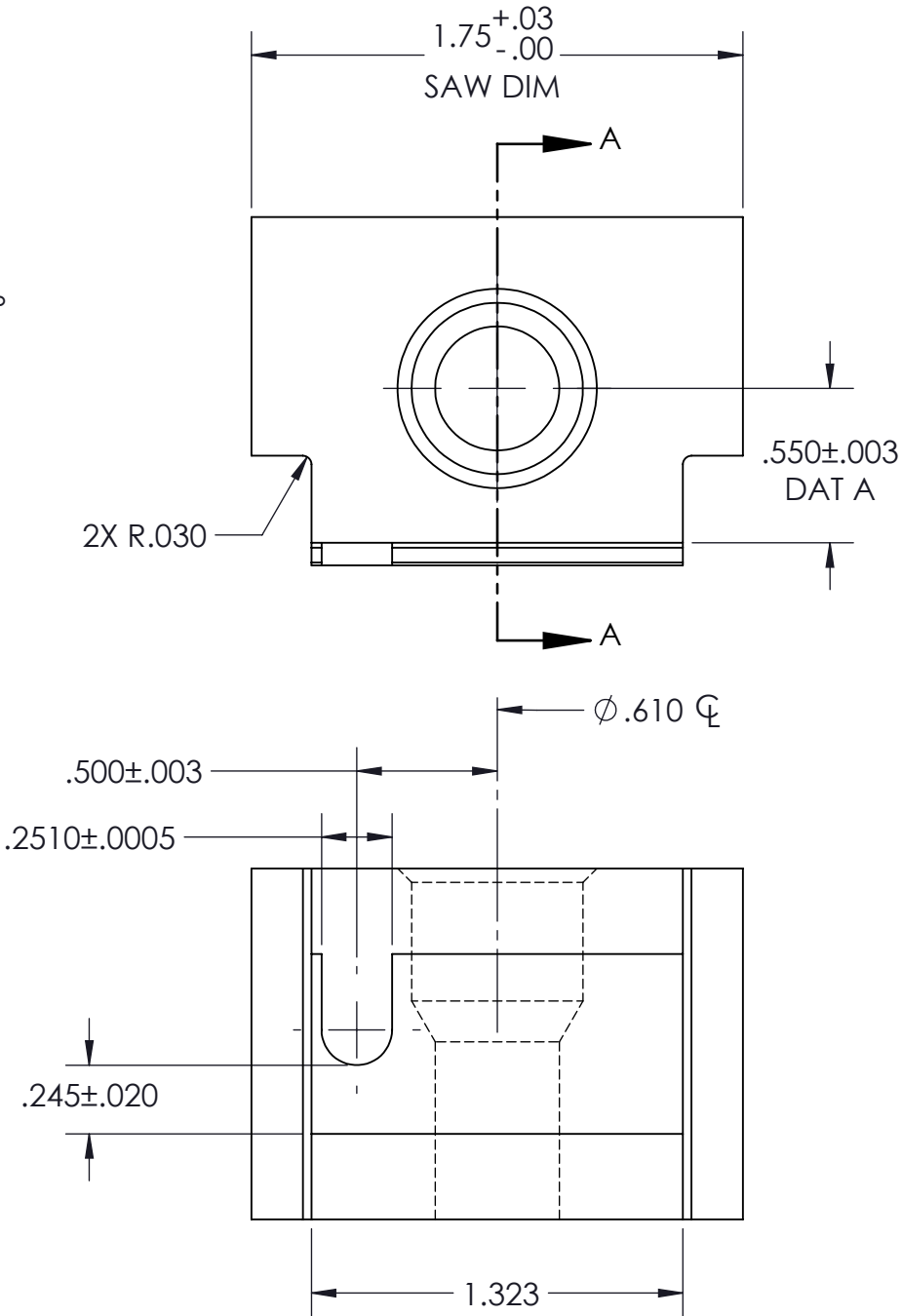
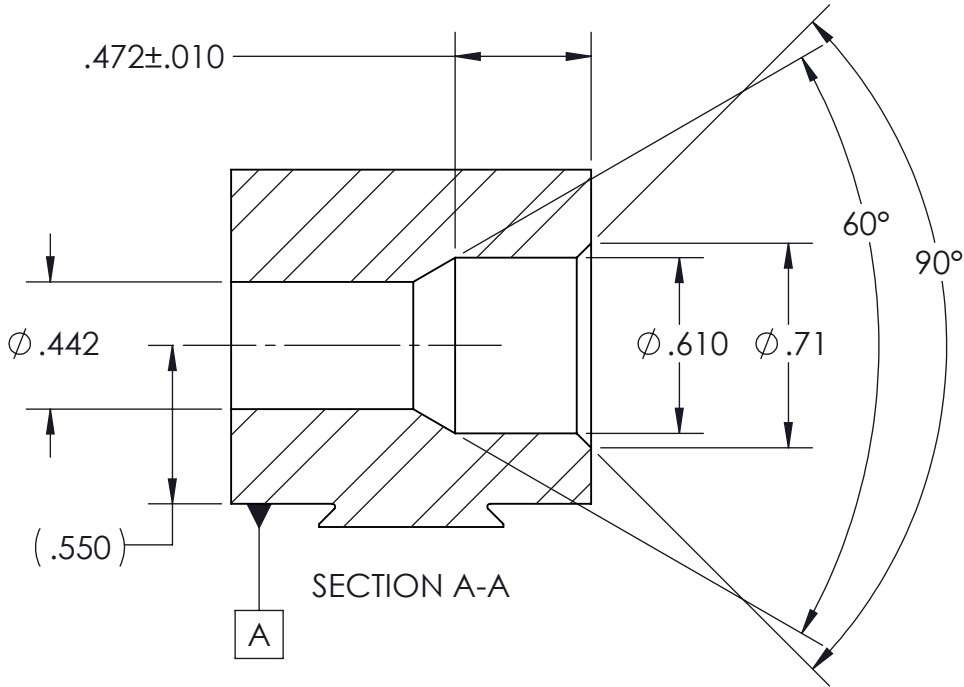




NOTES: UNLESS OTHERWISE SPECIFIED

1. MATERIAL: 4140 STEEL CD HEAT TREAT TO 38-44 HRC
2. FINISH: N/A
3. DEBURR ALL SHARP EDGES
4. DIMENSIONS APPLY AFTER HEAT TREAT

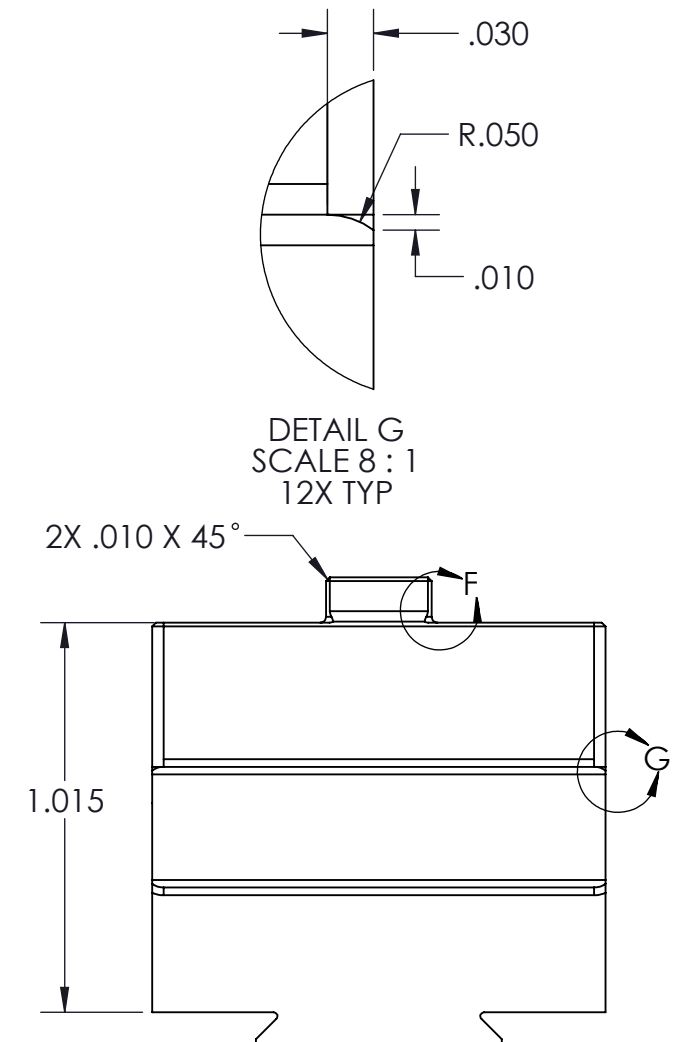
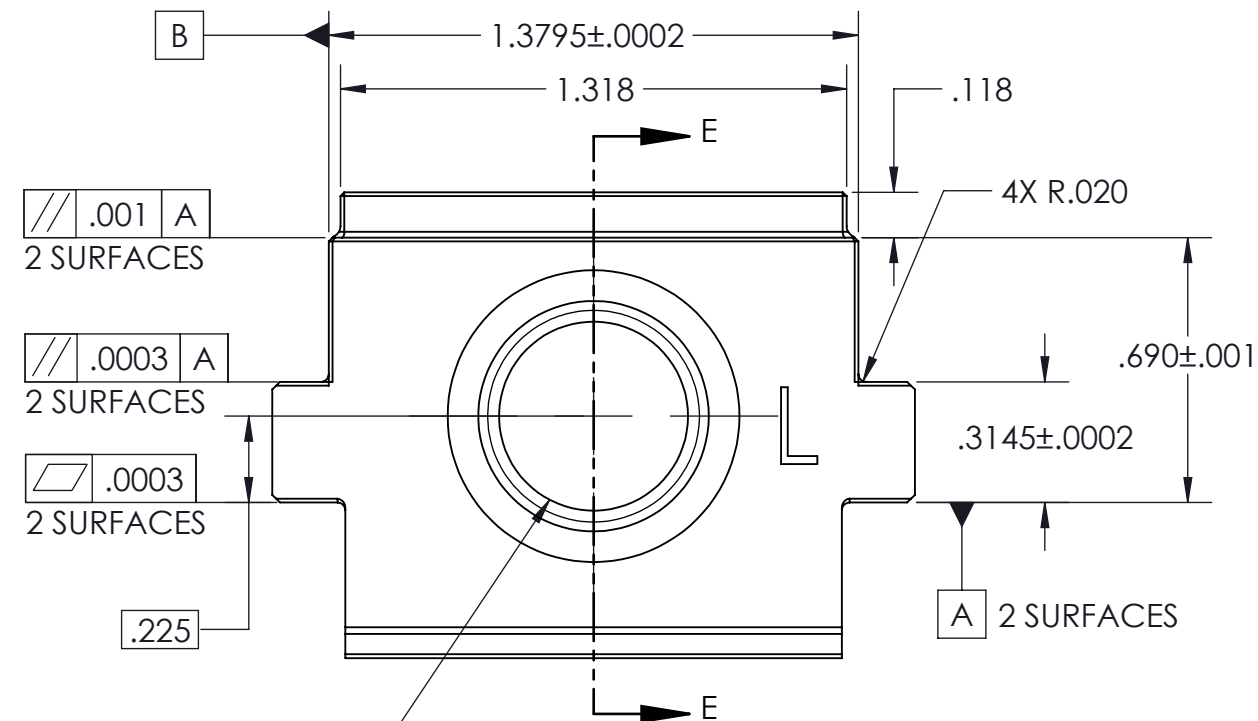
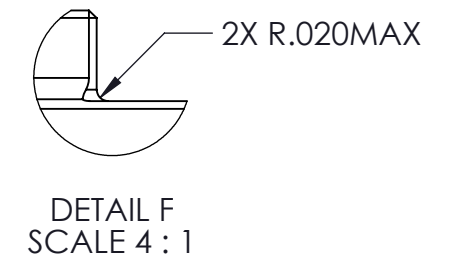
REVISION	DESCRIPTION	APPROVAL
B	ADDED .03" CORNER RADIUS	A. LANE
C	COUNTERBORE DEPTH CHANGE	A. LANE




BLANK

INCH		TOLERANCES		APPROVALS				5thAXIS		WWW.FIFTHAXIS.COM	
DRAWN IN ACCORDANCE WITH ASME Y14.5-2009		UNLESS OTHERWISE SPECIFIED		DRAWN BY						7140 ENGINEER ROAD	
PROPRIETARY AND CONFIDENTIAL		X ± 0.1 .XX ± 0.01		A. LANE		05/15/19				SAN DIEGO, CA 92111	
		.X ± 0.05 .XXX ± 0.005		MANUFACTURING						P (858) 505-0432 F (858) 505-9344	
		ANGULAR ± 0.5°		BRAD B.		10/6/2015					
THE INFORMATION CONTAINED IN THIS DRAWING IS THE SOLE PROPERTY OF FIFTH AXIS, INC. ANY REPRODUCTION IN PART OR AS A WHOLE WITHOUT THE WRITTEN PERMISSION OF FIFTH AXIS, INC. IS PROHIBITED.		THIRD ANGLE PROJECTION		QUALITY				DESCRIPTION			
				BRENT B.		10/6/2015				75MM VISE, TRUCK BLANK, X	
				FINAL		10/6/2015		SIZE		PART NO.	
				CHRIS T.		10/6/2015		B		V75100X-2	
								DO NOT SCALE DRAWING		SCALE 1.5:1	
								WEIGHT:		SHEET 3 OF 8	
								REV		C	


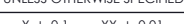
1. MATERIAL: 4140 STEEL CD, HARDNESS: 38-42 HRC
2. FINISH: BLACK OXIDE
3. DEBURR ALL SHARP EDGES
4. OIL FINISH ALLOWED
5. ALL CHAMFER TOLERANCE $\pm .008$



M14X1.5 - 6H LH THRU ALL
LEFT HAND THREAD

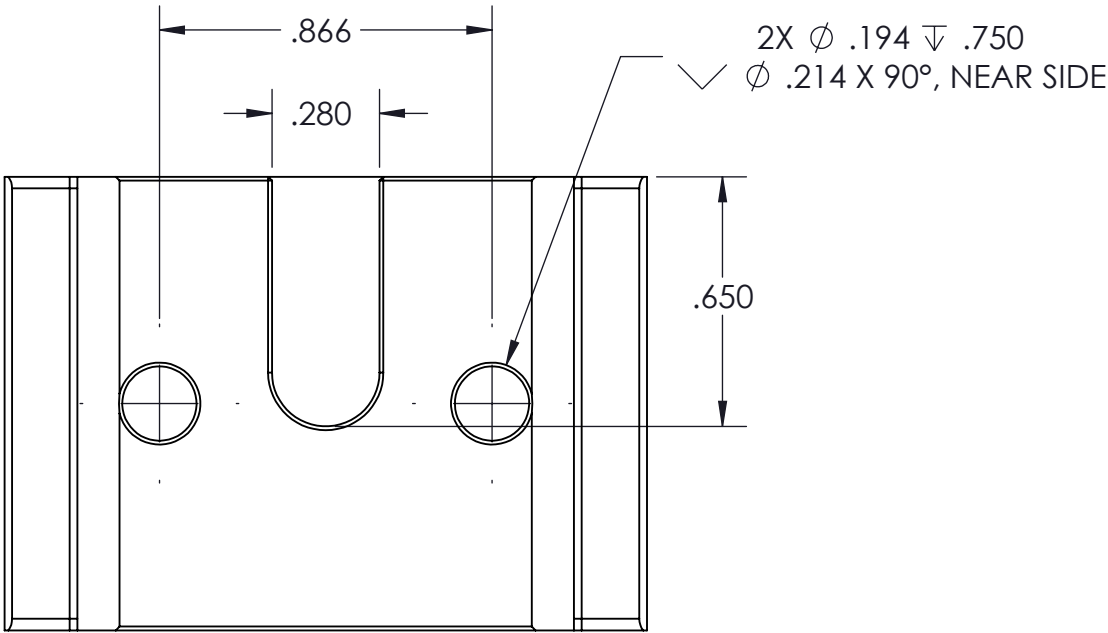
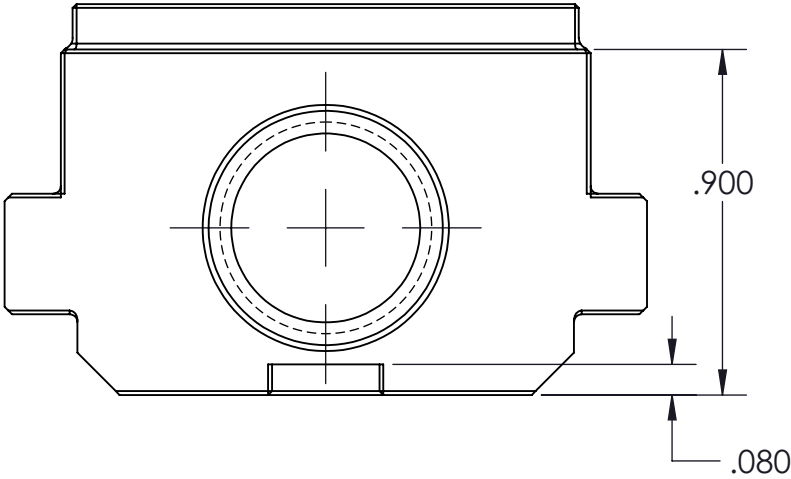
	ϕ .003	A	B	C
---	-------------	---	---	---

MILL OP 3


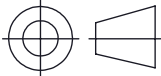
<div>INCH</div> <div>DRAWN IN ACCORDANCE WITH ASME Y14.5-2009</div>		<div>TOLERANCES</div> <div>UNLESS OTHERWISE SPECIFIED</div>		<div>APPROVALS</div>		<div> 5thAXIS</div> <div>WWW.FIFTHAXIS.COM 7140 ENGINEER ROAD SAN DIEGO, CA 92111 P (858) 505-0432 F (858) 505-9344</div>	
<div>PROPRIETARY AND CONFIDENTIAL</div>		<div>X ± 0.1 .XX ± 0.01 .X ± 0.05 .XXX ± 0.005 ANGULAR ± 0.5°</div>		<div>DRAWN BY</div> <div>Y. RHEE</div> <div>08/26/21</div>			
		<div>THIRD ANGLE PROJECTION</div> <div></div>		<div>MANUFACTURING</div>		<div>DESCRIPTION</div> <div>75MM VISE, RIGHT TRUCK, X</div>	
<div>THE INFORMATION CONTAINED IN THIS DRAWING IS THE SOLE PROPERTY OF FIFTH AXIS, INC. ANY REPRODUCTION IN PART OR AS A WHOLE WITHOUT THE WRITTEN PERMISSION OF FIFTH AXIS, INC. IS PROHIBITED.</div>		<div>QUALITY</div>		<div>SIZE</div> <div>B</div>		<div>PART NO.</div> <div>V75100X-2L</div> <div>REV</div> <div>C</div>	
		<div>FINAL</div> <div>A. LANE</div>		<div>DO NOT SCALE DRAWING</div>		<div>SCALE 2:1</div>	
				<div>WEIGHT:</div>		<div>SHEET 5 OF 8</div>	

NOTES: UNLESS OTHERWISE SPECIFIED

1. MATERIAL: 4140 STEEL CD, HARDNESS: 38-42 HRC
2. FINISH: BLACK OXIDE
3. DEBURR ALL SHARP EDGES
4. OIL FINISH ALLOWED

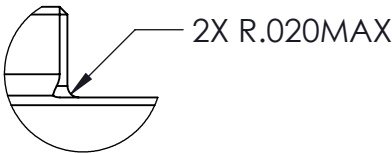


MILL OP 4

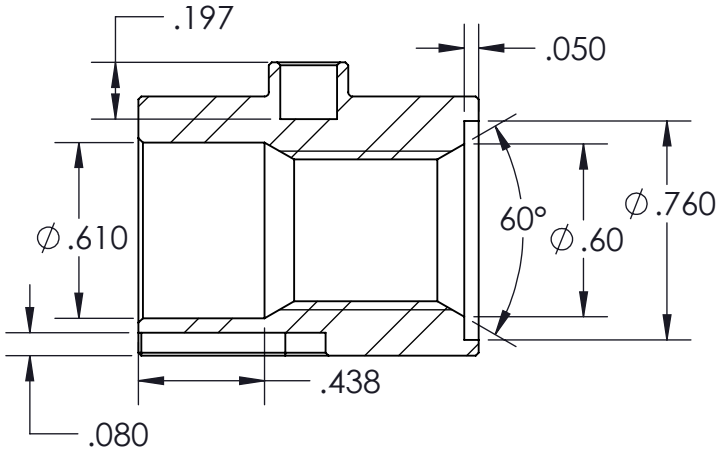
<div>INCH</div> <div><small>DRAWN IN ACCORDANCE WITH ASME Y14.5-2009</small></div> <div>PROPRIETARY AND CONFIDENTIAL</div> <div><small>THE INFORMATION CONTAINED IN THIS DRAWING IS THE SOLE PROPERTY OF FIFTH AXIS, INC. ANY REPRODUCTION IN PART OR AS A WHOLE WITHOUT THE WRITTEN PERMISSION OF FIFTH AXIS, INC. IS PROHIBITED.</small></div>	TOLERANCES <small>UNLESS OTHERWISE SPECIFIED</small>		APPROVALS		<div> 5thAXIS</div> <div><small>WWW.FIFTHAXIS.COM 7140 ENGINEER ROAD SAN DIEGO, CA 92111 P (858) 505-0432 F (858) 505-9344</small></div>
	<small>X ± 0.1 .XX ± 0.01 .X ± 0.05 .XXX ± 0.005 ANGULAR ± 0.5°</small>		<small>DRAWN BY</small> Y. RHEE	08/26/21	
	<small>THIRD ANGLE PROJECTION</small>		<small>MANUFACTURING</small>		
			<small>QUALITY</small>		
			<small>FINAL</small> A. LANE		<small>DESCRIPTION</small> 75MM VISE, TRUCK, X
				<small>SIZE</small> B	<small>PART NO.</small> V75100X-2R AND V75100X-2L
				<small>DO NOT SCALE DRAWING</small>	<small>SCALE 2:1</small>
				<small>WEIGHT:</small>	<small>SHEET 6 OF 8</small>

NOTES: UNLESS OTHERWISE SPECIFIED

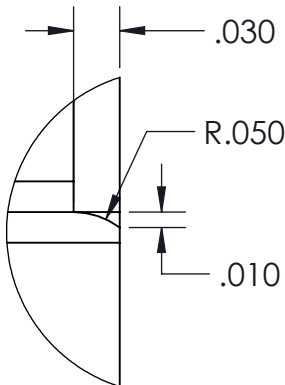
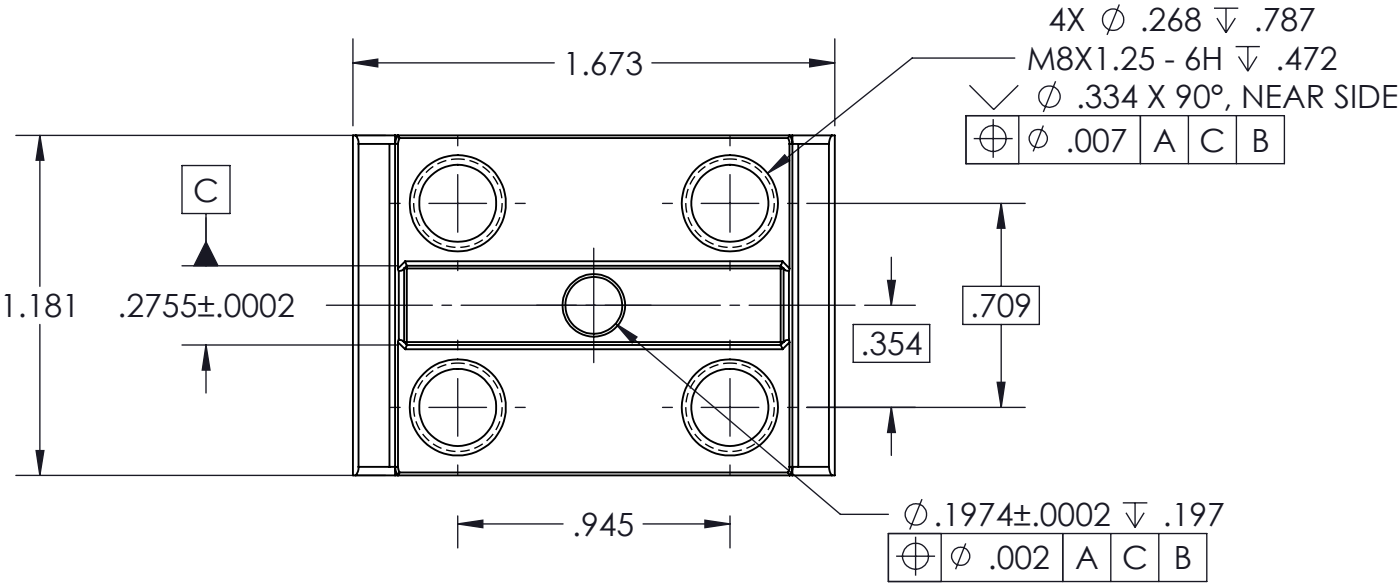
1. MATERIAL: 4140 STEEL CD, HARDNESS: 38-42 HRC
2. FINISH: BLACK OXIDE
3. DEBURR ALL SHARP EDGES
4. OIL FINISH ALLOWED
5. ALL CHAMFER TOLERANCE $\pm .008$



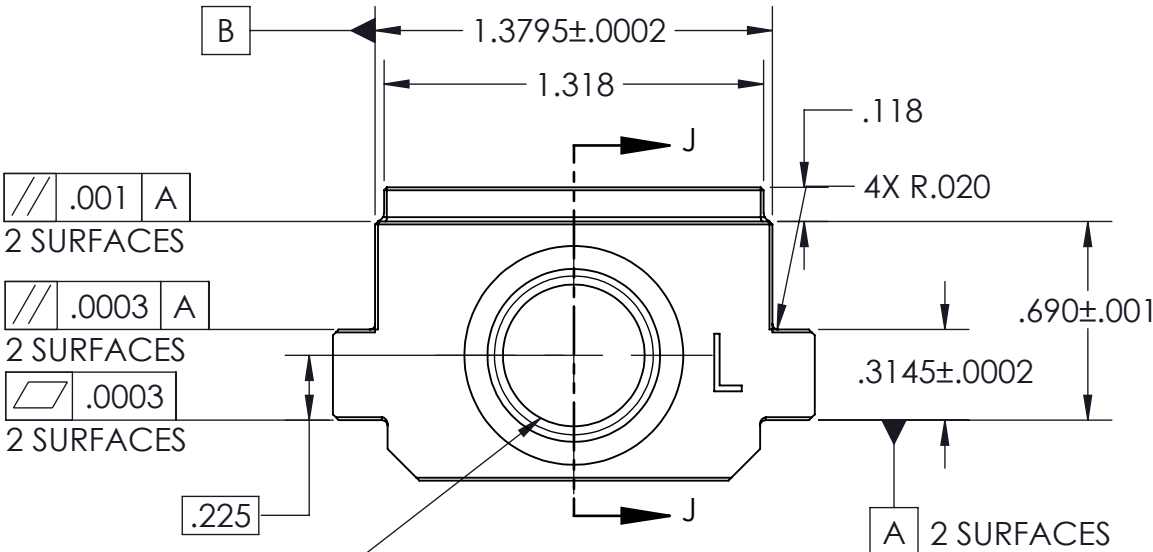
DETAIL K
SCALE 4 : 1



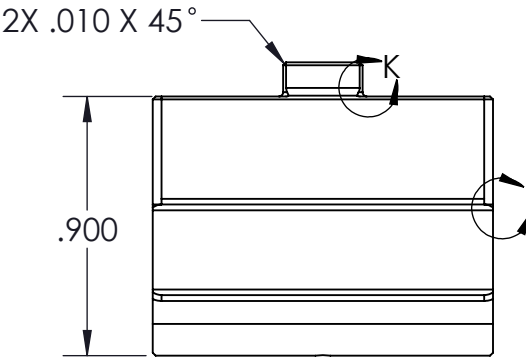
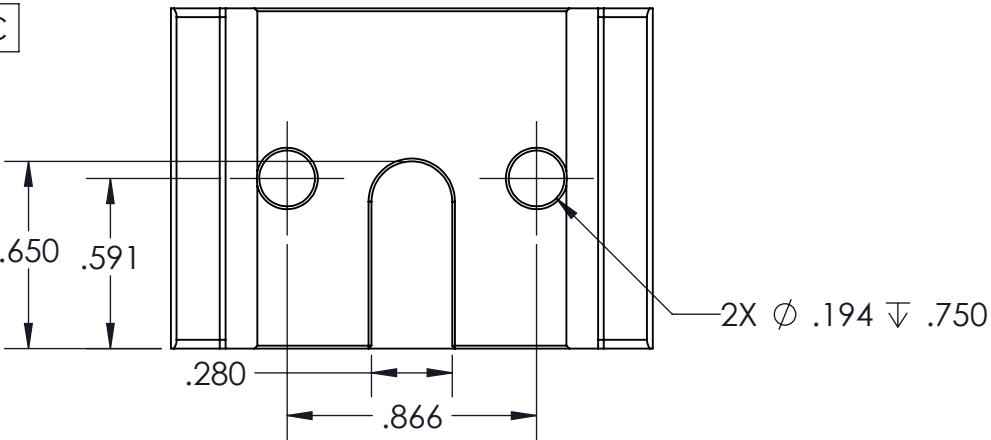
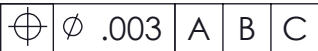
SECTION J-J



DETAIL L
SCALE 8 : 1
12X TYP



M14X1.5 - 6H LH THRU ALL
LEFT HAND THREAD



FINAL PRINT

REVISIONS				
ZONE	REV.	DESCRIPTION	DATE	APPROVED
B8	C	SOCKET COUNTERBORE DEPTH CHANGE	8/31/22	A. LANE

INCH		TOLERANCES		APPROVALS		5 th AXIS	
DRAWN IN ACCORDANCE WITH ASME Y14.5-2009		UNLESS OTHERWISE SPECIFIED		DRAWN BY Y. RHEE		WWW.FIFTHAXIS.COM	
PROPRIETARY AND CONFIDENTIAL		X ± 0.1 .XX ± 0.01 .X ± 0.05 .XXX ± 0.005 ANGULAR ± 0.5°		08/26/21		7140 ENGINEER ROAD SAN DIEGO, CA 92111	
THE INFORMATION CONTAINED IN THIS DRAWING IS THE SOLE PROPERTY OF FIFTH AXIS, INC. ANY REPRODUCTION IN PART OR AS A WHOLE WITHOUT THE WRITTEN PERMISSION OF FIFTH AXIS, INC. IS PROHIBITED.		THIRD ANGLE PROJECTION		MANUFACTURING		P (858) 505-0432 F (858) 505-9344	
				QUALITY		DESCRIPTION	
				FINAL		75MM VISE, LEFT TRUCK, X	
				A. LANE		SIZE PART NO.	
						B V75100X-2L	
						DO NOT SCALE DRAWING	
						SCALE 1.5:1	
						WEIGHT:	
						SHEET 8 OF 8	