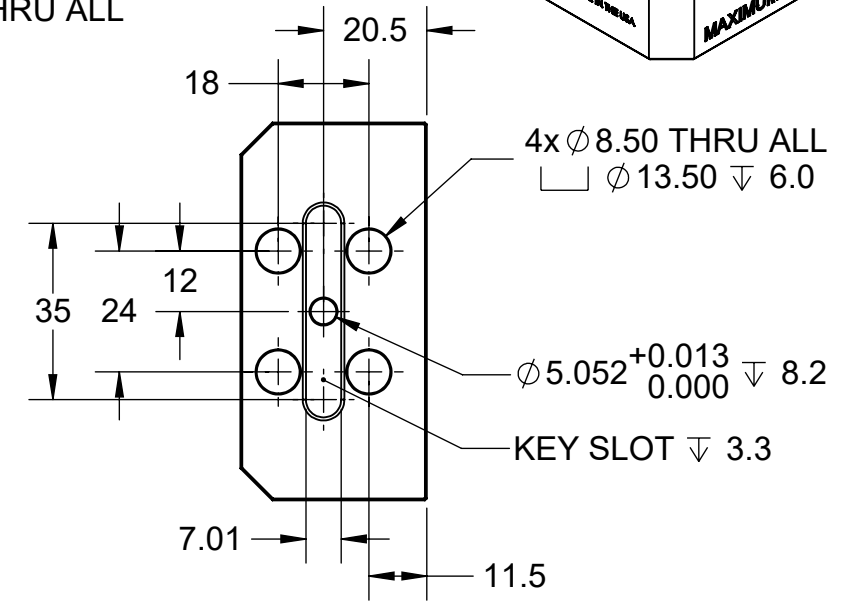
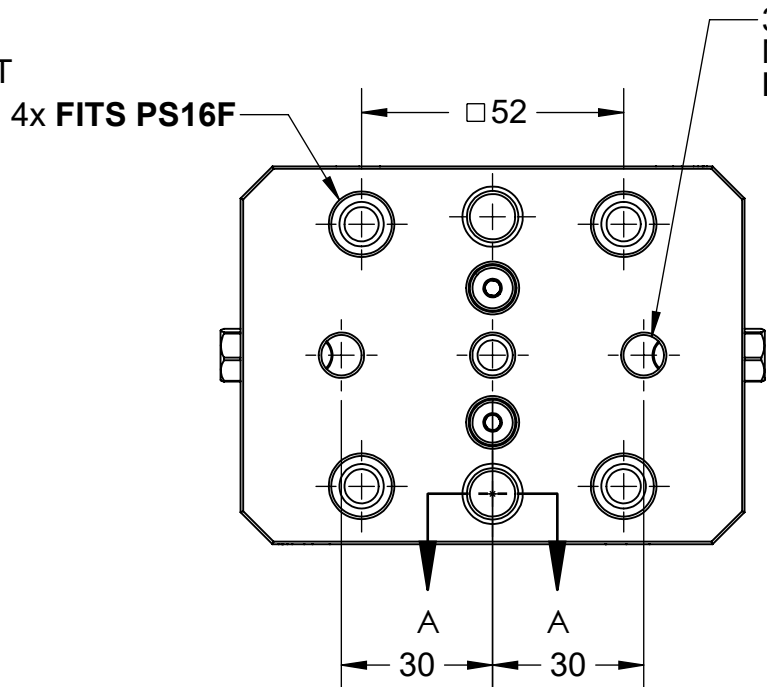
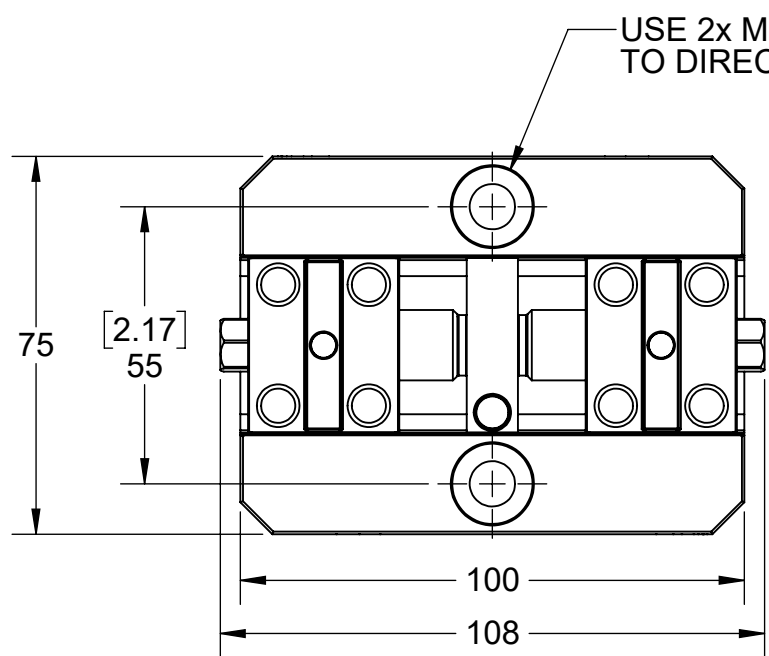
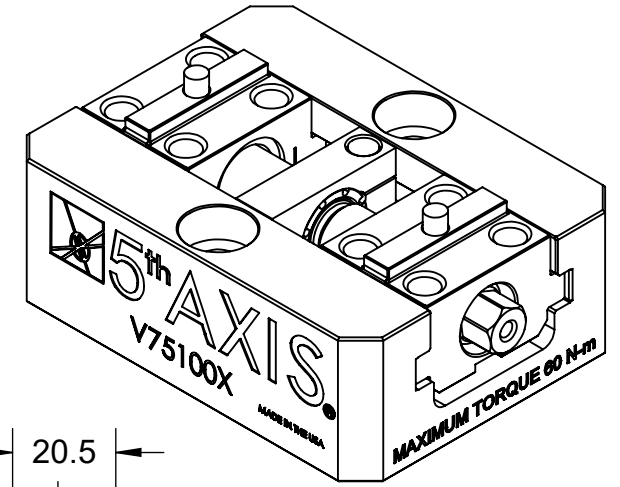


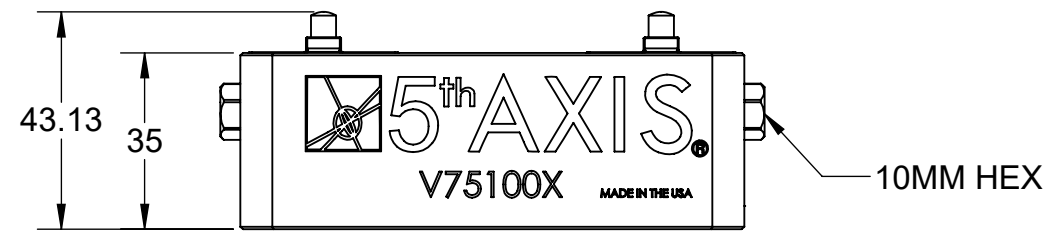
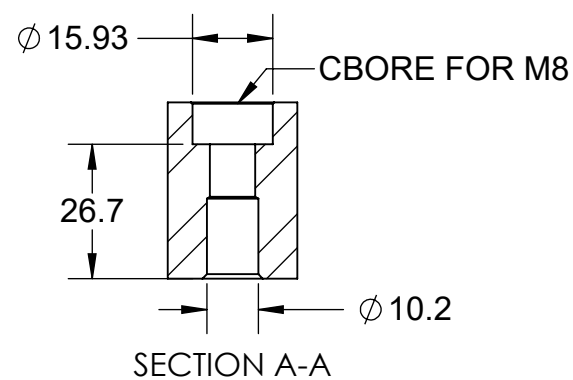
8 7 6 5 4 3 2 1

TECHNICAL DATA	V75100X
JAW WIDTH	-
BASE LENGTH	3.94" (100mm)
MAXIMUM TORQUE (JAW BOLT)	20 ft-lb (27 Nm)
CLAMPING FORCE	5000 lbf @ 45 ft-lb (22 kN @ 60 Nm)
MAXIMUM TORQUE (LEADSCREW)	45 ft-lb (60 Nm)
MAXIMUM TORQUE (MOUNTING BOLT)	25 ft-lb (34 Nm)
SELF-CENTERING ACCURACY	± 0.0005" (± 12.7 μm)

V75100X-NJ



JAW MOUNTING



MILLIMETER			
WWW.5THAXIS.COM 7140 ENGINEER ROAD SAN DIEGO, CA 92111 P (858) 505-0432			
DESCRIPTION		SMALL SELF-CENTERING VISE, NO JAWS	
SIZE	PART NO.	REV	
B	V75100X-NJ	B	
DO NOT SCALE DRAWING		SCALE 2:3	WEIGHT:
			SHEET 1 OF 2

D

C

B

A

D

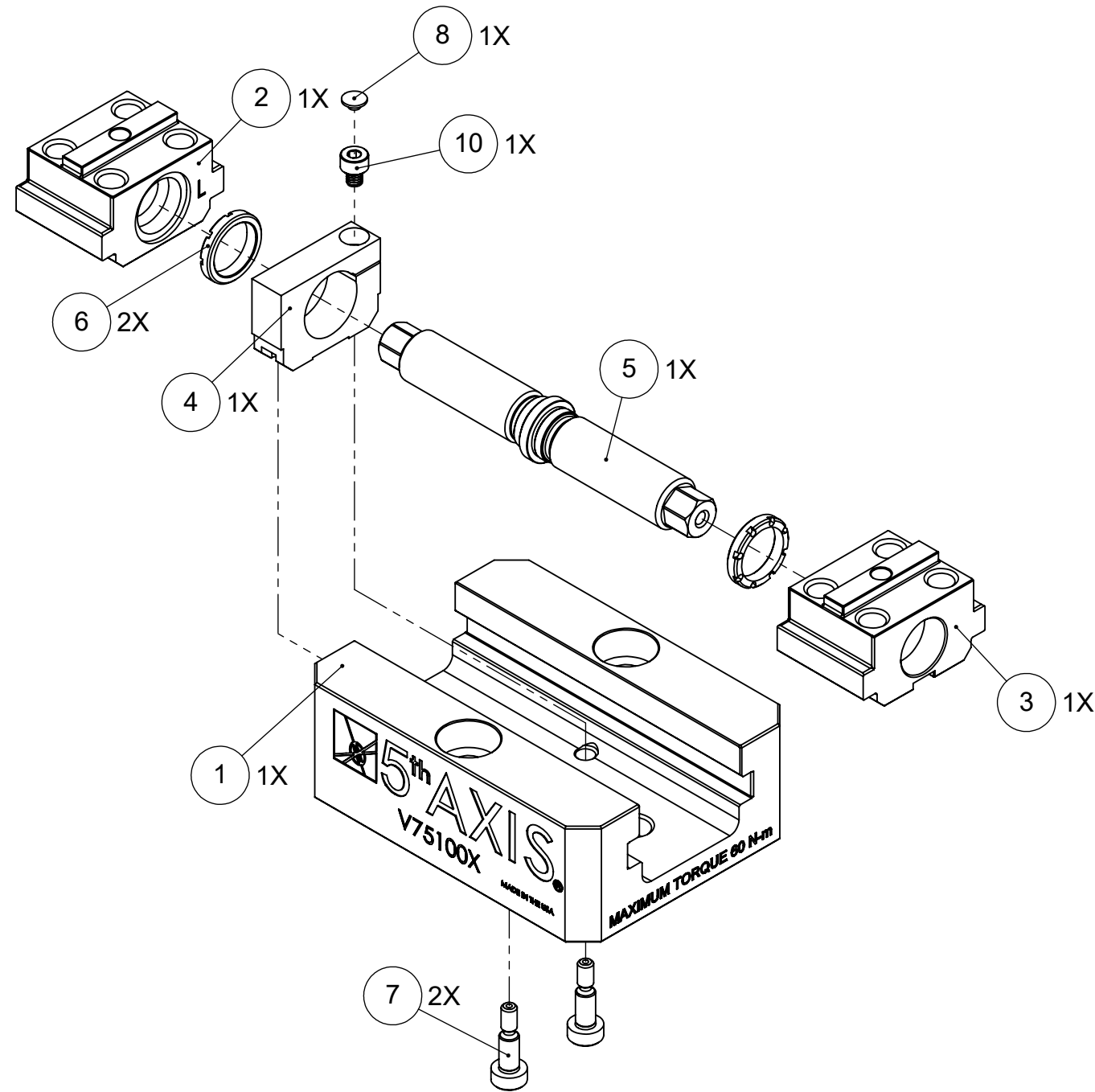
C

B


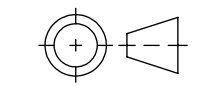
A

8 7 6 5 4 3 2 1

V75100X-NJ



ITEM NO.	PART NUMBER	DESCRIPTION	QTY.
1	V75100X-1	BASE	1
2	V75100X-2L	LEFT TRUCK	1
3	V75100X-2R	RIGHT TRUCK	1
4	V75100X-3	CENTER BLOCK	1
5	V75100-4	LEAD SCREW	1
6	V75100-6	CENTER BLOCK RING	2
7	SB3V	SHOULDER BOLT	2
8	M4C	PLASTIC PLUG	1
9	M5X10.DP	DOWEL PIN, ϕ 5 X 10MM (NOT SHOWN)	2
10	-	SOCKET HEAD SCREW, M4x0.7x5mm	1
11	-	SOCKET HEAD SCREW M8 - 1.25 X 16MM (NOT SHOWN)	8
12	-	SOCKET HEAD SCREW M8 - 1.25 X 40MM (NOT SHOWN)	2
13	ANTI-SEIZE	ANTI-SEIZE (NOT SHOWN)	1
14	LP8	LOCATING PIN (NOT SHOWN)	2
15	TS10	THUMB SCREW (NOT SHOWN)	1

MILLIMETER		FOR REFERENCE ONLY - NOT FOR RESALE	
WWW.5THAXIS.COM			
7140 ENGINEER ROAD SAN DIEGO, CA 92111 P (858) 505-0432			
THIRD ANGLE PROJECTION		DESCRIPTION	REV
		SIZE B PART NO. V75100X-NJ	B
DO NOT SCALE DRAWING		SCALE 2:3	WEIGHT:
			SHEET 2 OF 2