

8

7

6

5

4

3

2

1

D

D

C

C

B

B

A

A

8

7

6

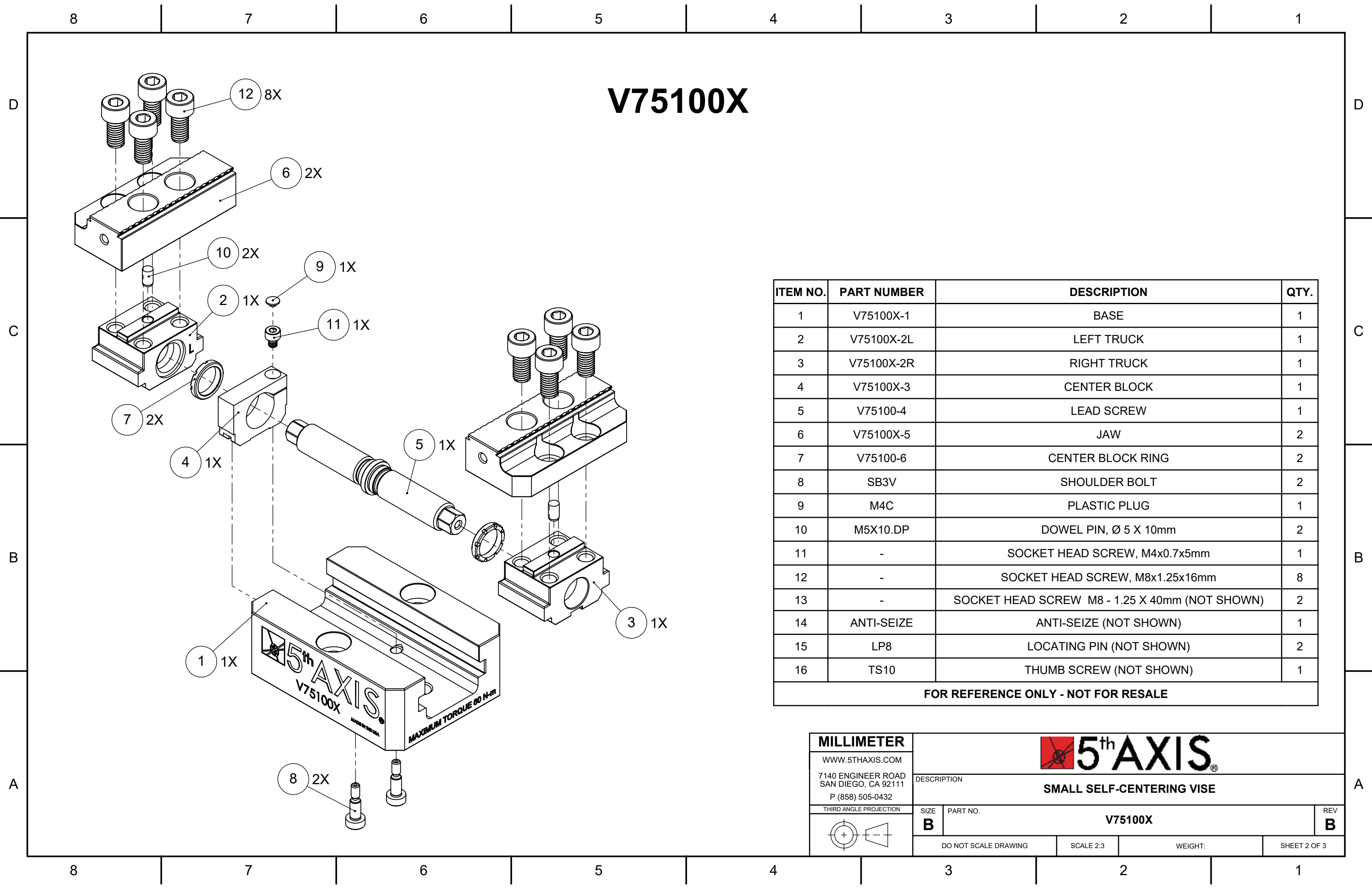
5

4

3

2

1



V75100X

ITEM NO.	PART NUMBER	DESCRIPTION	QTY.
1	V75100X-1	BASE	1
2	V75100X-2L	LEFT TRUCK	1
3	V75100X-2R	RIGHT TRUCK	1
4	V75100X-3	CENTER BLOCK	1
5	V75100-4	LEAD SCREW	1
6	V75100X-5	JAW	2
7	V75100-6	CENTER BLOCK RING	2
8	SB3V	SHOULDER BOLT	2
9	M4C	PLASTIC PLUG	1
10	M5X10.DP	DOWEL PIN, Ø 5 X 10mm	2
11	-	SOCKET HEAD SCREW, M4x0.7x5mm	1
12	-	SOCKET HEAD SCREW, M8x1.25x16mm	8
13	-	SOCKET HEAD SCREW M8 - 1.25 X 40mm (NOT SHOWN)	2
14	ANTI-SEIZE	ANTI-SEIZE (NOT SHOWN)	1
15	LP8	LOCATING PIN (NOT SHOWN)	2
16	TS10	THUMB SCREW (NOT SHOWN)	1
FOR REFERENCE ONLY - NOT FOR RESALE			

MILLIMETER

WWW.5THAXIS.COM

7140 ENGINEER ROAD  
SAN DIEGO, CA 92111

P (858) 505-0432

THIRD ANGLE PROJECTION

DESCRIPTION

SMALL SELF-CENTERING VISE

SIZE

B

PART NO.

V75100X

REV

B

DO NOT SCALE DRAWING

SCALE 2:3

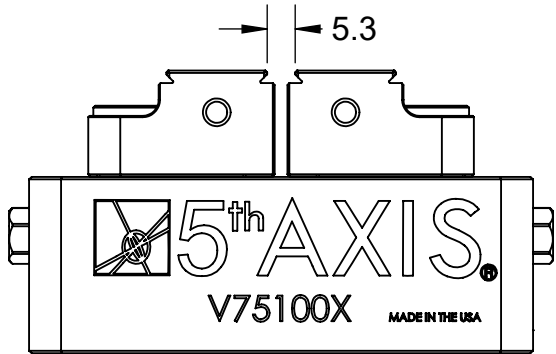
WEIGHT:

SHEET 2 OF 3

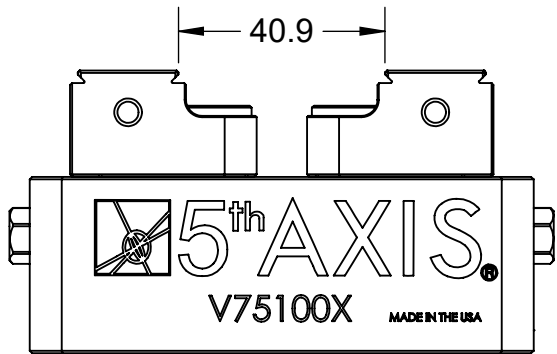
87654321

**NOTE:** USING DOVETAIL ALLOWS VISE TO CLAMP LARGER PART.  
BELOW CLAMPING RANGE ONLY SHOWS THE CAPABILITY OF THE GRIPPER TEETH.

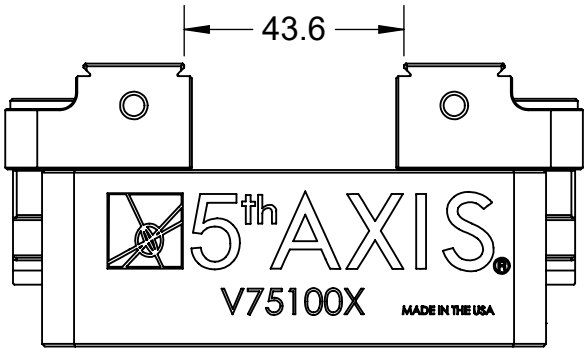
V75100X



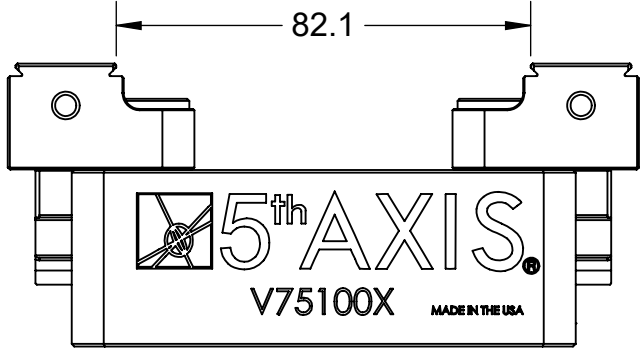
FORWARD JAWS (MINIMUM CLAMPING RANGE)




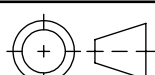
REVERSE JAWS (MINIMUM CLAMPING RANGE)



FORWARD JAWS (MAXIMUM CLAMPING RANGE)



REVERSE JAWS (MAXIMUM CLAMPING RANGE)

MILLIMETER		 5 <sup>th</sup> AXIS®		
WWW.5THAXIS.COM				
7140 ENGINEER ROAD SAN DIEGO, CA 92111 P (858) 505-0432		DESCRIPTION  SMALL SELF-CENTERING VISE		
THIRD ANGLE PROJECTION	SIZE <b>B</b>	PART NO.  V75100X		REV  <b>B</b>
	DO NOT SCALE DRAWING		SCALE 2:3	WEIGHT:
				SHEET 3 OF 3

87654321