

8

7

6

5

4

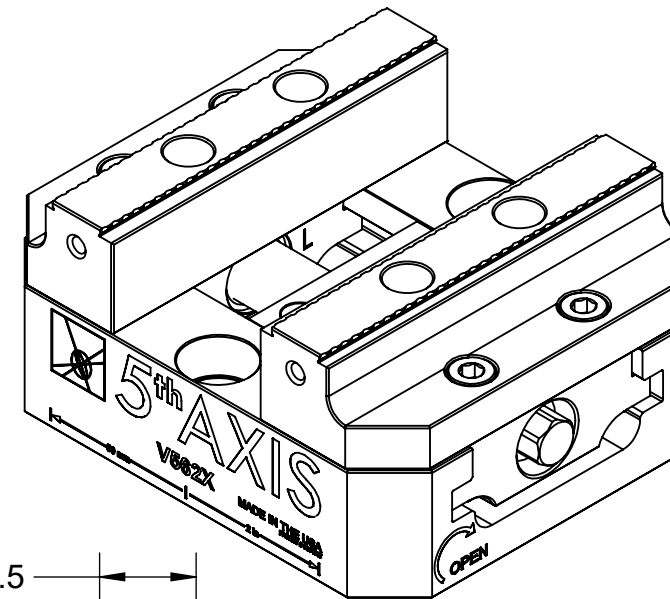
3

2

1

| TECHNICAL DATA | V562X |
|--------------------------------|---------------|
| JAW WIDTH | 125.73mm |
| BASE LENGTH | 152.4mm |
| MAXIMUM TORQUE (JAW BOLT) | 47 Nm |
| CLAMPING FORCE | 25 kN @ 75 Nm |
| MAXIMUM TORQUE (LEADSCREW) | 74 Nm |
| MAXIMUM TORQUE (MOUNTING BOLT) | 47 Nm |
| SELF-CENTERING ACCURACY | ± 12.7 μm |

V562X



D

D

C

C

B

B

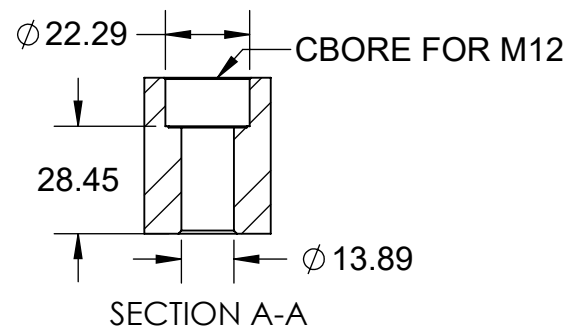
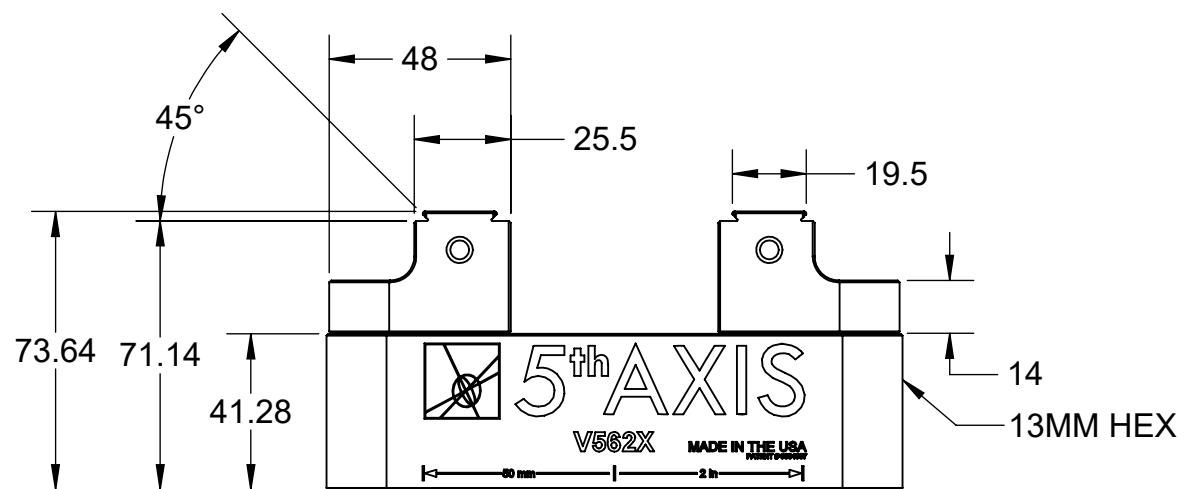
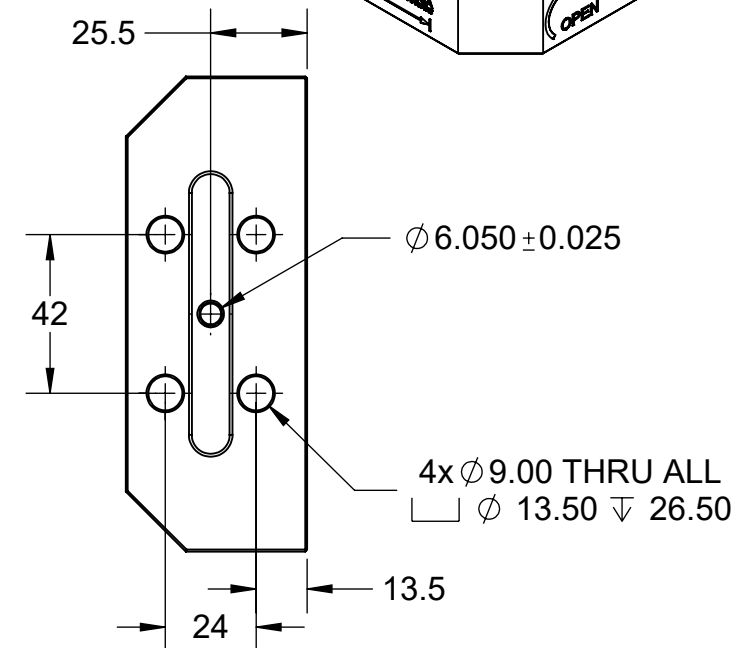
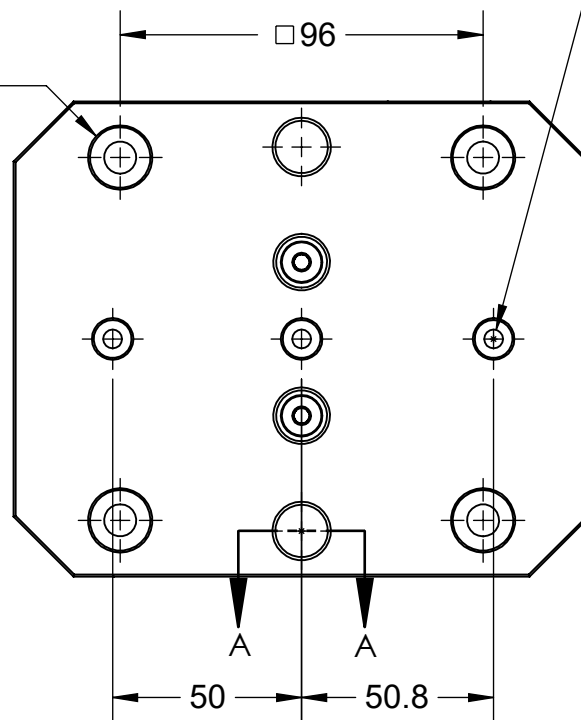
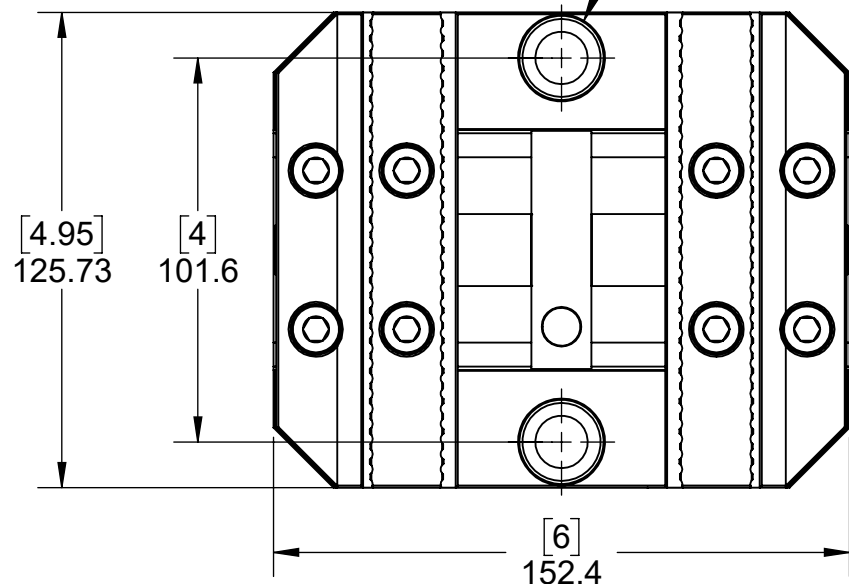
A


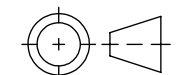
A

USE 2x M12 SHCS TO DIRECT MOUNT

4x FITS PS20F

3X 10.013±0.005▽6.35
M6X1.0 - 6H THRU ALL
FITS LP10



| | | | |
|---|---|--------------------------|-----------------|
| MILLIMETER WWW.5THAXIS.COM 7140 ENGINEER ROAD SAN DIEGO, CA 92111 P (858) 505-0432 |  | | |
| | DESCRIPTION MEDIUM SELF-CENTERING VISE | | |
| THIRD ANGLE PROJECTION  | SIZE B | PART NO. V562X | REV B |
| DO NOT SCALE DRAWING | | SCALE 1:2 | WEIGHT: |
| | | SHEET 1 OF 3 | |

8

7

6

5

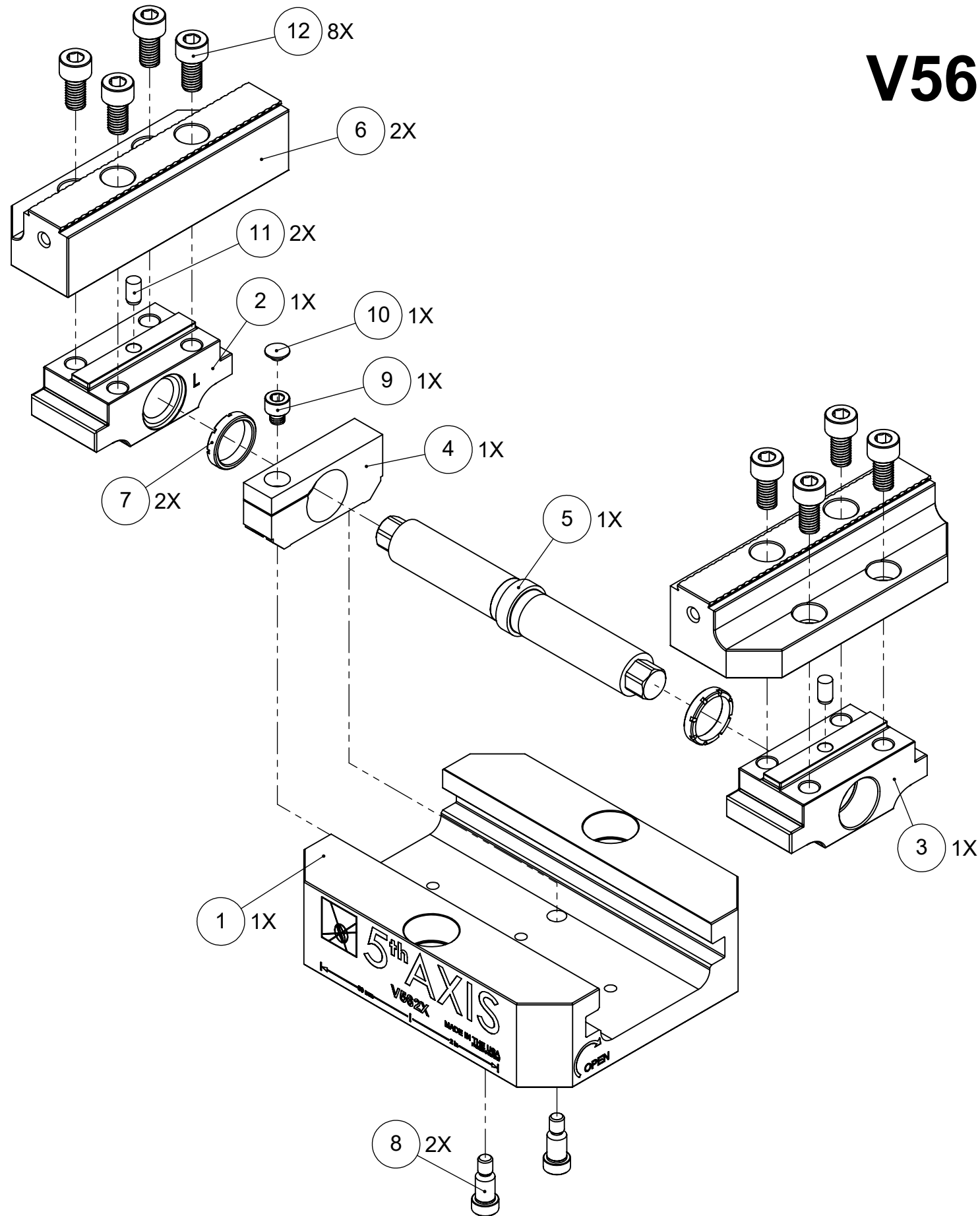
4

3

2

1

V562X



| ITEM NO. | PART NUMBER | DESCRIPTION | QTY. |
|--|-------------|---------------------------------|------|
| 1 | V562X-1 | BASE | 1 |
| 2 | V562X-2L | LEFT TRUCK | 1 |
| 3 | V562X-2R | RIGHT TRUCK | 1 |
| 4 | V562MX-3 | CENTER BLOCK | 1 |
| 5 | V562M-4 | LEAD SCREW | 1 |
| 6 | V562X-5 | JAW | 2 |
| 7 | V56124-6 | CENTER BLOCK RING | 2 |
| 8 | SB5VX | SHOULDER BOLT | 2 |
| 9 | - | SOCKET HEAD SCREW, M6x1x6mm | 1 |
| 10 | M6C | PLASTIC PLUG | 1 |
| 11 | M6X12.DP | DOWEL PIN, M6 X 12mm | 2 |
| 12 | - | SOCKET HEAD SCREW, M8x1.25x16mm | 8 |
| 13 | ANTI-SEIZE | ANTI-SEIZE (NOT SHOWN) | 1 |
| 14 | LP10 | LOCATING PIN (NOT SHOWN) | 2 |
| 15 | TS13 | THUMB SCREW (NOT SHOWN) | 1 |
| FOR REFERENCE ONLY - NOT FOR RESALE | | | |

| | | | |
|---|--|---------------------------------|------------------------|
| MILLIMETER WWW.5THAXIS.COM 7140 ENGINEER ROAD SAN DIEGO, CA 92111 P (858) 505-0432 | | | |
| | DESCRIPTION MEDIUM SELF-CENTERING VISE | | |
| THIRD ANGLE PROJECTION | SIZE B | PART NO. V562X | REV B |
| DO NOT SCALE DRAWING | | SCALE 1:2 | WEIGHT: |
| | | | SHEET 2 OF 3 |

8

7

6

5

4

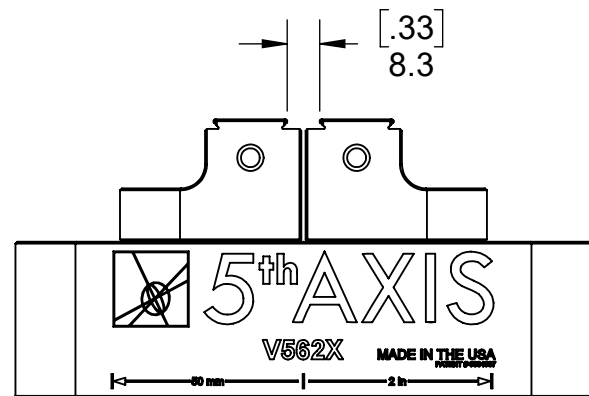
3

2

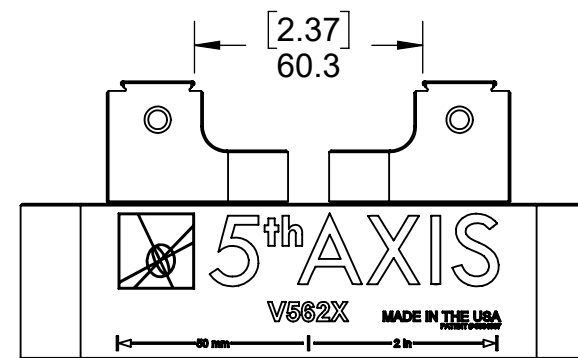
1

NOTE: USING DOVETAIL ALLOWS VISE TO CLAMP LARGER PART.
BELOW CLAMPING RANGE ONLY SHOWS THE CAPABILITY OF THE GRIPPER TEETH.

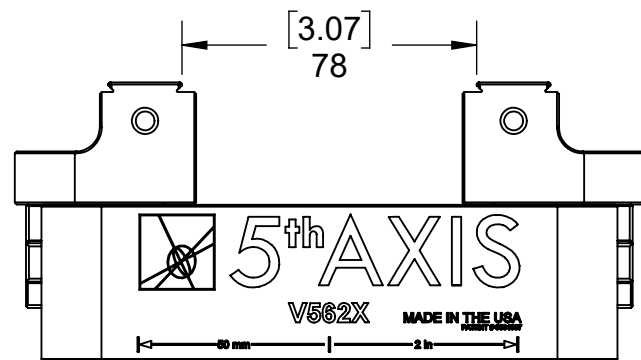
V562X



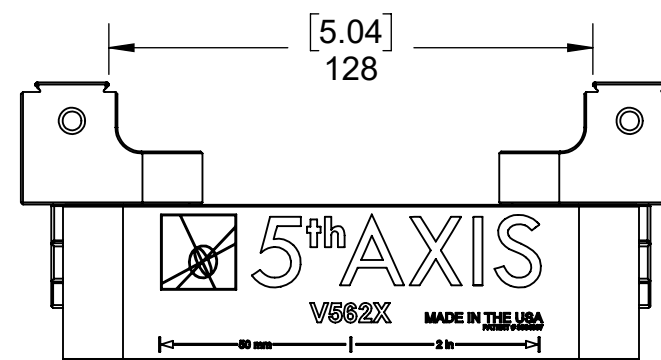
FORWARD JAWS (MINIMUM CLAMPING RANGE)




REVERSE JAWS (MINIMUM CLAMPING RANGE)



FORWARD JAWS (MAXIMUM CLAMPING RANGE)



REVERSE JAWS (MAXIMUM CLAMPING RANGE)

| | | | | |
|--|--------------|---|-----------------------------------|--------------|
| MILLIMETER | |  | | |
| WWW.5THAXIS.COM 7140 ENGINEER ROAD SAN DIEGO, CA 92111 P (858) 505-0432 | | | | |
| THIRD ANGLE PROJECTION | | DESCRIPTION | MEDIUM SELF-CENTERING VISE | |
| SIZE | PART NO. | REV | | |
| B | V562X | B | | |
| DO NOT SCALE DRAWING | | SCALE 1:2 | WEIGHT: | SHEET 3 OF 3 |

8

7

6

5

4

3

2

1