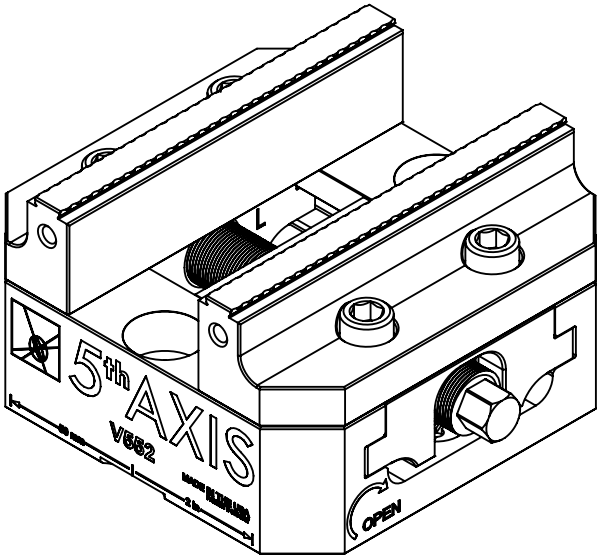


8 7 6 5 4 3 2 1

| TECHNICAL DATA          | V552             |
|-------------------------|------------------|
| JAW LENGTH              | 125.73MM         |
| MAXIMUM CLAMPING FORCE  | 20 kN @ 75 Nm    |
| CLAMPING RANGE STANDARD | 0 - 66.04MM      |
| CLAMPING RANGE REVERSED | 68.32 - 131.06MM |
| SELF-CENTERING ACCURACY | ± 0MM            |

V552



D

D

C

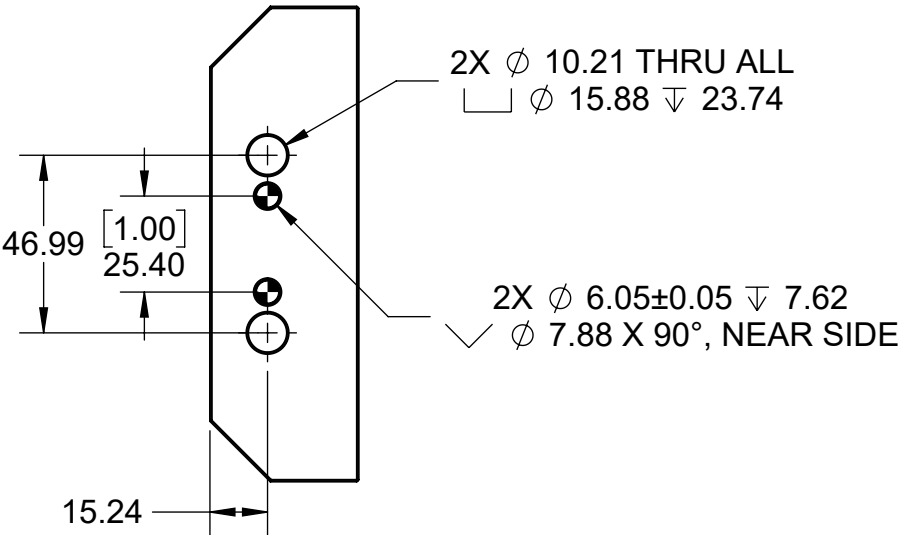
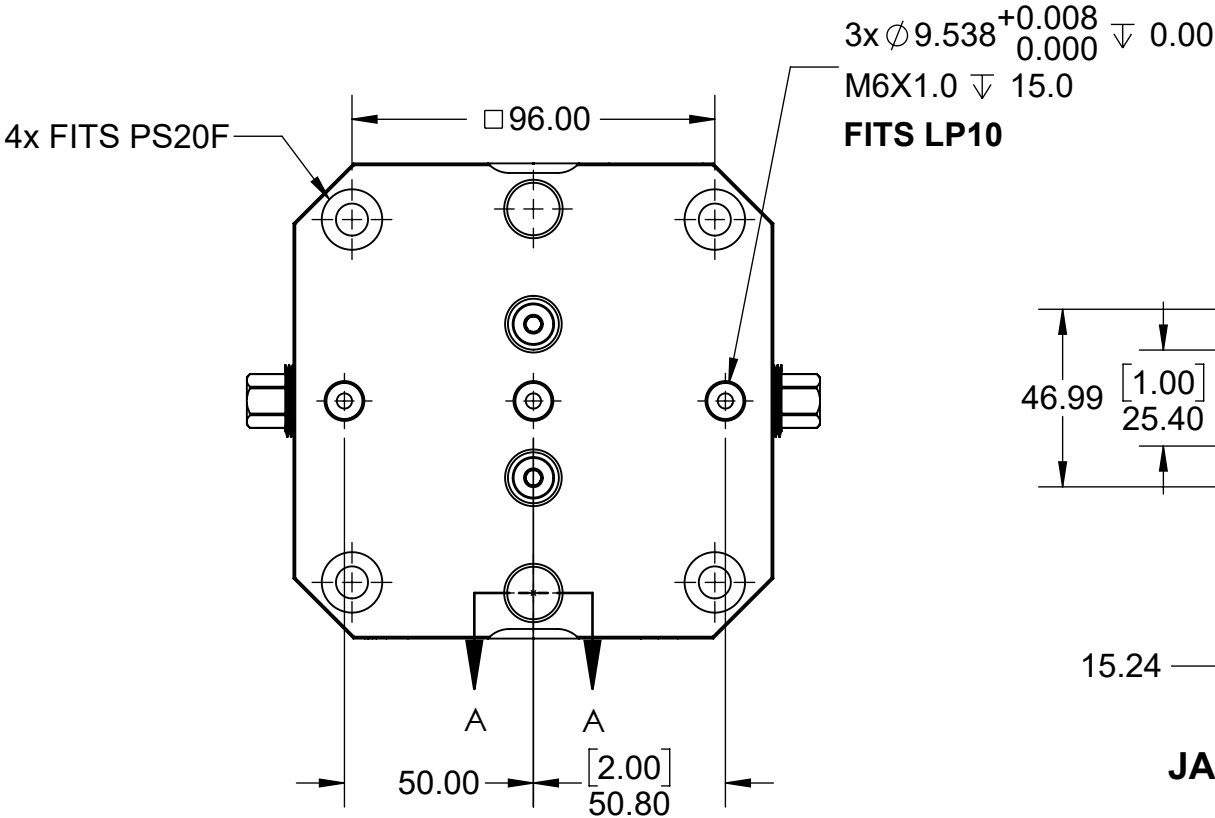
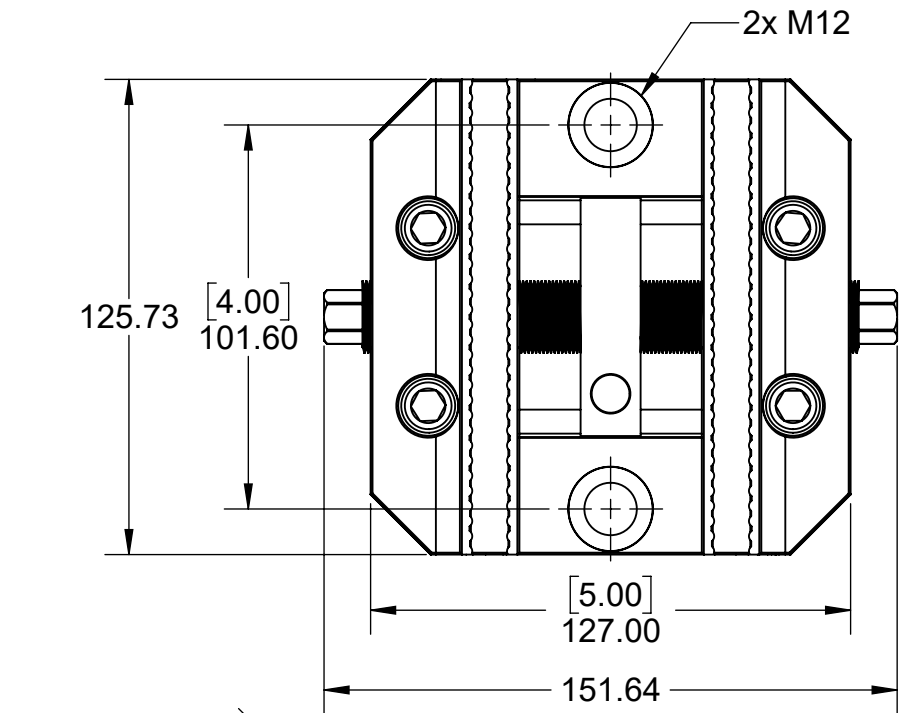
C

B

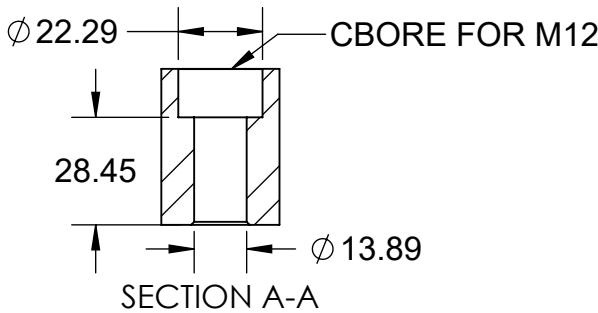
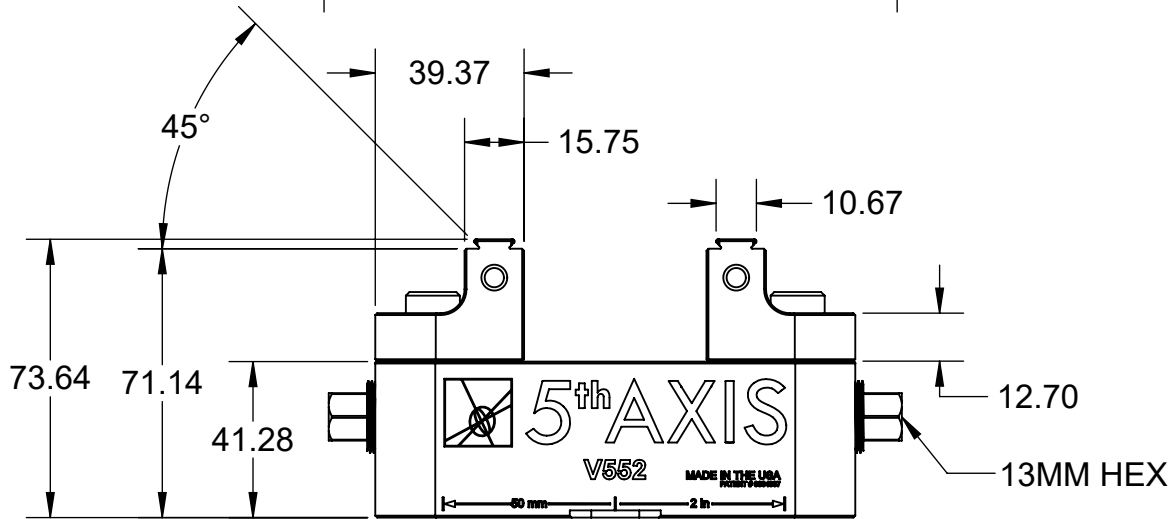
B

A

A



JAW MOUNTING



MILLIMETER

DRAWN IN ACCORDANCE WITH  
ASME Y14.5-2009

WWW.5THAXIS.COM

7140 ENGINEER ROAD  
SAN DIEGO, CA 92111

P (858) 505-0432  
F (858) 505-9344

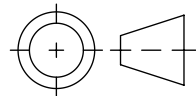
TOLERANCES  
UNLESS OTHERWISE SPECIFIED

x ± 0.1 .xx ± 0.01

.x ± 0.05 .xxx ± 0.005

ANGULAR ± 0.5°

THIRD ANGLE PROJECTION

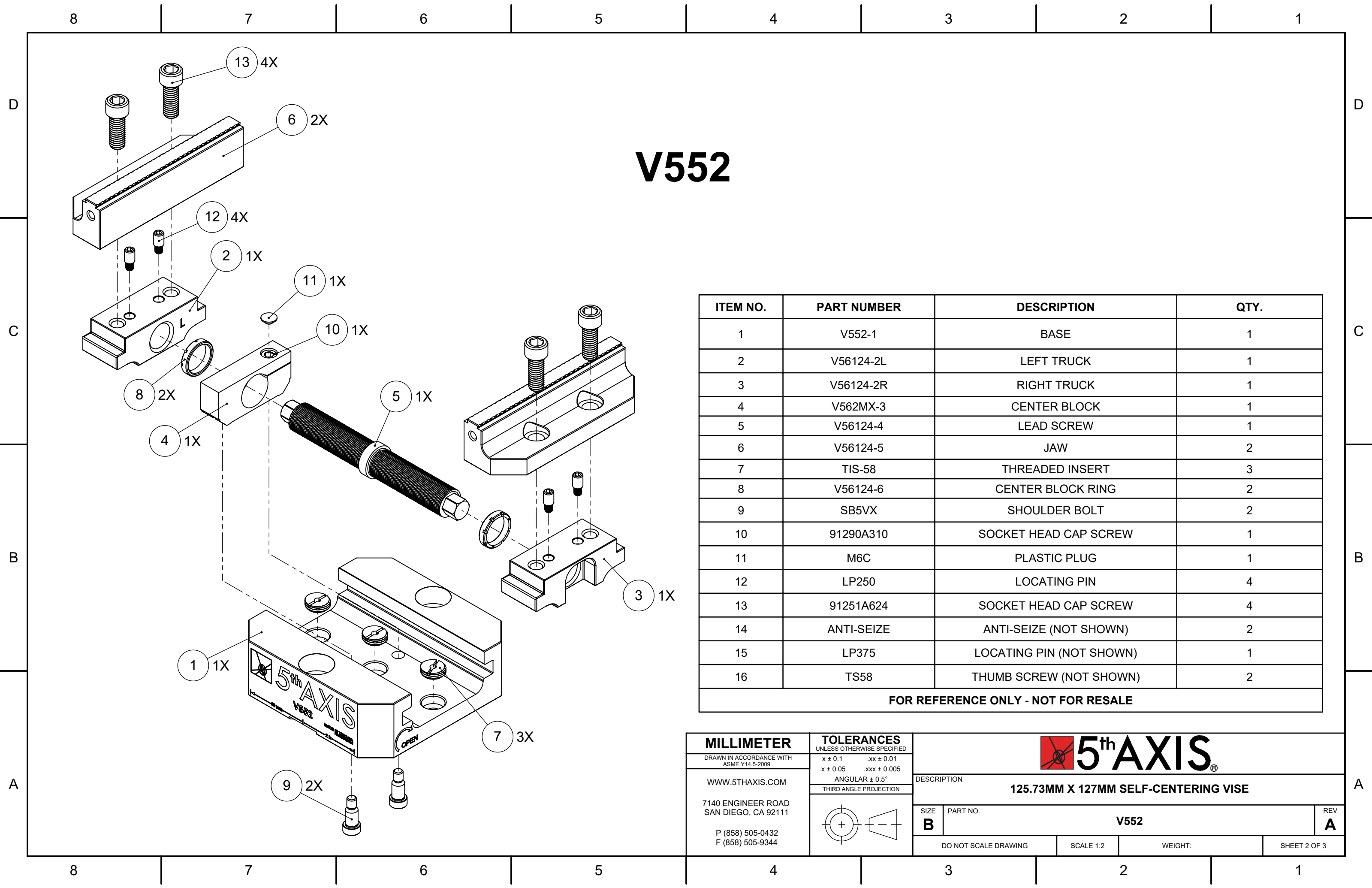


DESCRIPTION  
125.73MM X 127MM SELF-CENTERING VISE

| SIZE | PART NO. | REV |
|------|----------|-----|
| B    | V552     | A   |

DO NOT SCALE DRAWING SCALE 1:2 WEIGHT: SHEET 1 OF 3

8 7 6 5 4 3 2 1



V552

| ITEM NO.                            | PART NUMBER | DESCRIPTION              | QTY. |
|-------------------------------------|-------------|--------------------------|------|
| 1                                   | V552-1      | BASE                     | 1    |
| 2                                   | V56124-2L   | LEFT TRUCK               | 1    |
| 3                                   | V56124-2R   | RIGHT TRUCK              | 1    |
| 4                                   | V562MX-3    | CENTER BLOCK             | 1    |
| 5                                   | V56124-4    | LEAD SCREW               | 1    |
| 6                                   | V56124-5    | JAW                      | 2    |
| 7                                   | TIS-58      | THREADED INSERT          | 3    |
| 8                                   | V56124-6    | CENTER BLOCK RING        | 2    |
| 9                                   | SB5VX       | SHOULDER BOLT            | 2    |
| 10                                  | 91290A310   | SOCKET HEAD CAP SCREW    | 1    |
| 11                                  | M6C         | PLASTIC PLUG             | 1    |
| 12                                  | LP250       | LOCATING PIN             | 4    |
| 13                                  | 91251A624   | SOCKET HEAD CAP SCREW    | 4    |
| 14                                  | ANTI-SEIZE  | ANTI-SEIZE (NOT SHOWN)   | 2    |
| 15                                  | LP375       | LOCATING PIN (NOT SHOWN) | 1    |
| 16                                  | TS58        | THUMB SCREW (NOT SHOWN)  | 2    |
| FOR REFERENCE ONLY - NOT FOR RESALE |             |                          |      |

MILLIMETER

DRAWN IN ACCORDANCE WITH  
ASME Y14.5-2009

WWW.5THAXIS.COM

7140 ENGINEER ROAD  
SAN DIEGO, CA 92111

P (858) 505-0432  
F (858) 505-9344

TOLERANCES  
UNLESS OTHERWISE SPECIFIED

x ± 0.1

.xx ± 0.01

.x ± 0.05

.xxx ± 0.005

ANGULAR ± 0.5°

THIRD ANGLE PROJECTION

5<sup>th</sup>AXIS®

DESCRIPTION

125.73MM X 127MM SELF-CENTERING VISE

SIZE

B

PART NO.

V552

REV

A

DO NOT SCALE DRAWING

SCALE 1:2

WEIGHT:

SHEET 2 OF 3