

MATERIAL:

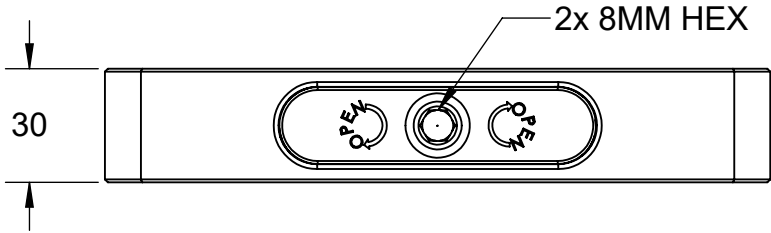
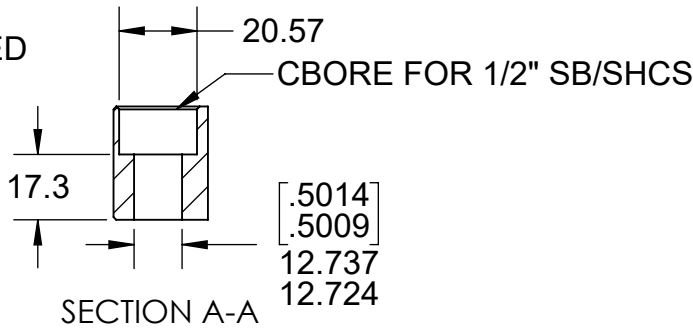
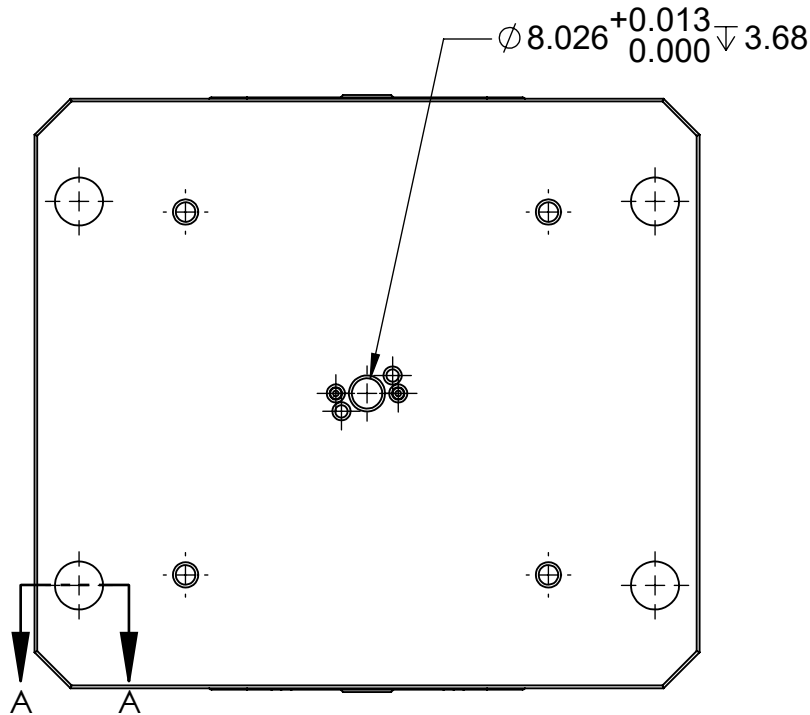
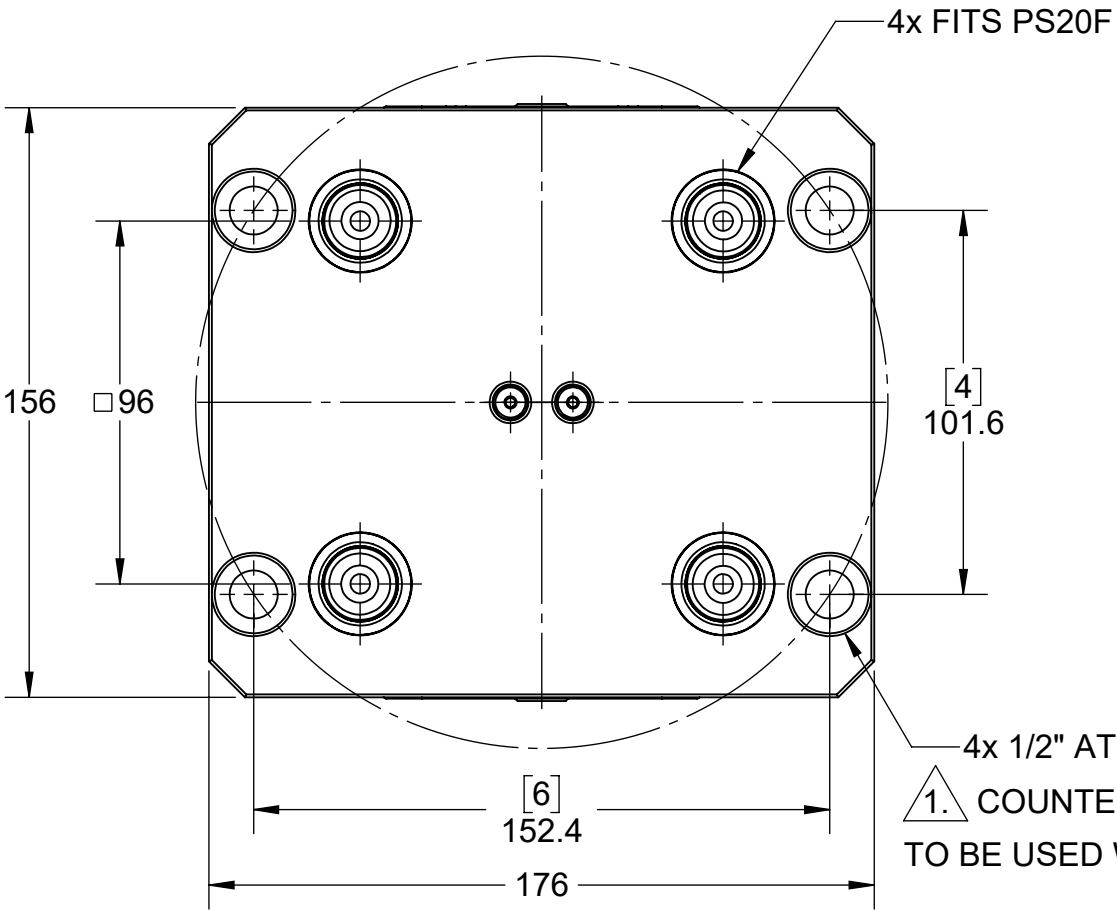
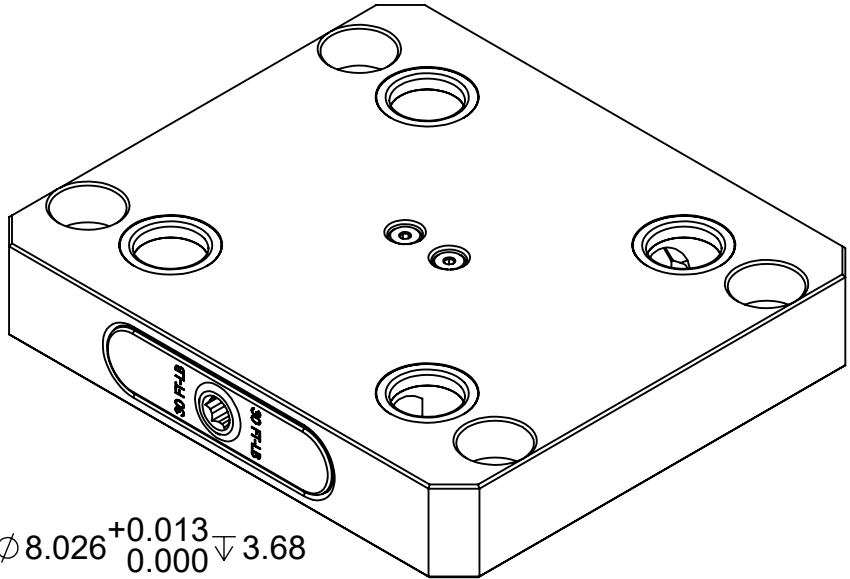
RL96A-67: 6061 ALUMINUM BODY


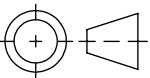
RL96S-67: 1018 STEEL BODY

RL96A-67

RL96S-67

1. USE TWO SHOULDER BOLTS TO
LOCATE AND CLOCK THE BASE



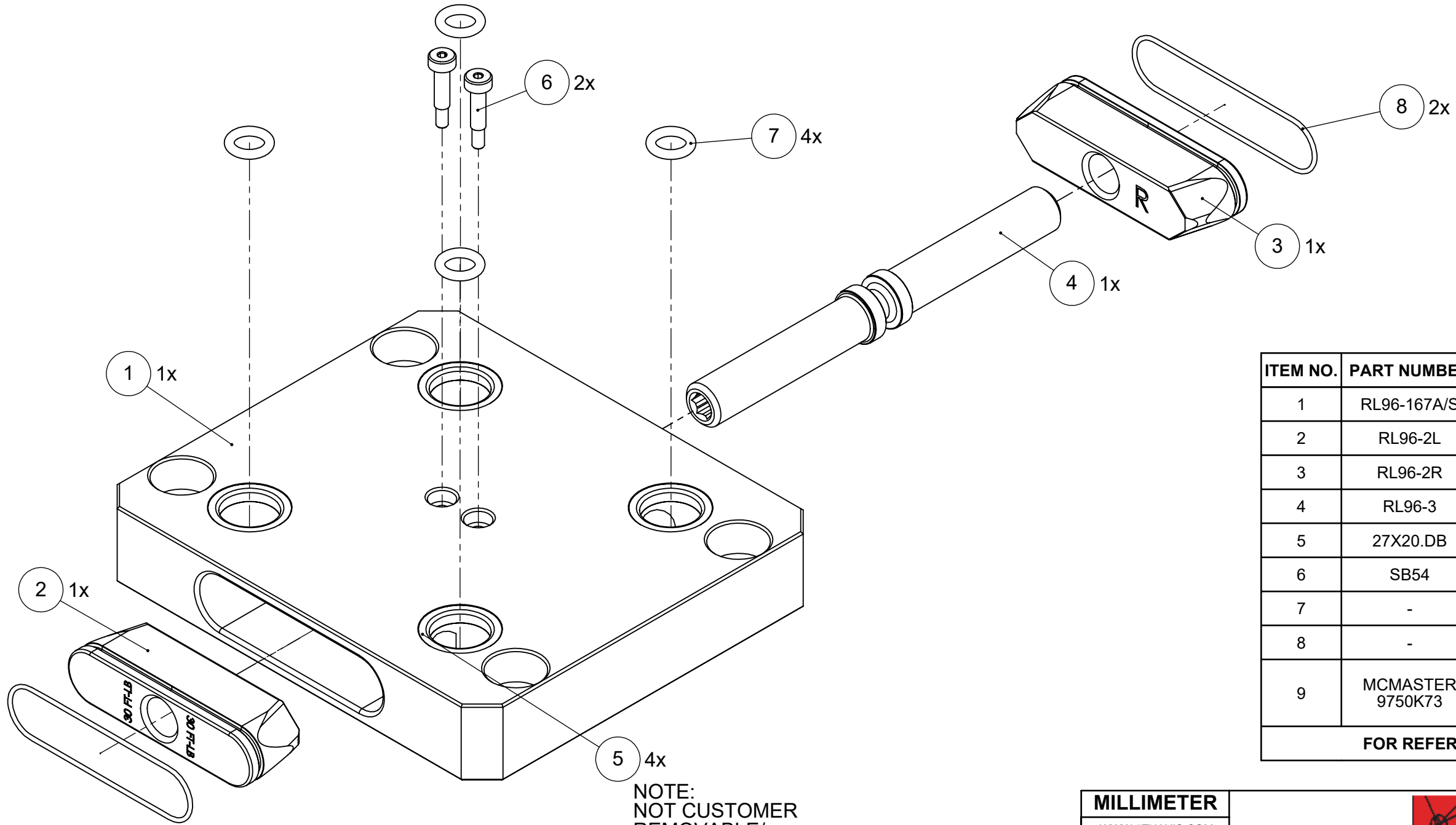
MILLIMETER				
WWW.5THAXIS.COM		DESCRIPTION		
7140 ENGINEER ROAD SAN DIEGO, CA 92111 P (858) 505-0432		ROCKLOCK™ 96MM LOW-PROFILE BASE		
THIRD ANGLE PROJECTION		SIZE	PART NO.	REV
		B	RL96A-67 / RL96S-67	B
DO NOT SCALE DRAWING		SCALE 1:2	WEIGHT:	SHEET 1 OF 2

MATERIAL:

RL96A-67: 6061 ALUMINUM BODY

RL96S-67: 1018 STEEL BODY

RL96A-67
RL96S-67



ITEM NO.	PART NUMBER	DESCRIPTION	QTY.
1	RL96-167A/S	ROCKLOCK™ BASE	1
2	RL96-2L	LEFT ROCKLOCK™ TRUCK	1
3	RL96-2R	RIGHT ROCKLOCK™ TRUCK	1
4	RL96-3	ROCKLOCK™ LEAD SCREW	1
5	27X20.DB	PRECISION BUSHING	4
6	SB54	SHOULDER BOLT	2
7	-	BUNA-N O-RING, 1/8 - #202	4
8	-	BUNA-N O-RING, 1/16 - #033	2
9	MCMASTER 9750K73	POLYETHYLENE PANEL PLUGS 19-20mm (NOT SHOWN)	4
FOR REFERENCE ONLY - NOT FOR RESALE			

MILLIMETER

WWW.5THAXIS.COM

7140 ENGINEER ROAD
SAN DIEGO, CA 92111

P (858) 505-0432

THIRD ANGLE PROJECTION

DESCRIPTION

ROCKLOCK™ 96MM LOW-PROFILE BASE

SIZE

B

PART NO.

RL96A-67 / RL96S-67

REV

B

DO NOT SCALE DRAWING

SCALE 1:2

WEIGHT:

SHEET 2 OF 2