

8

7

6

5

4

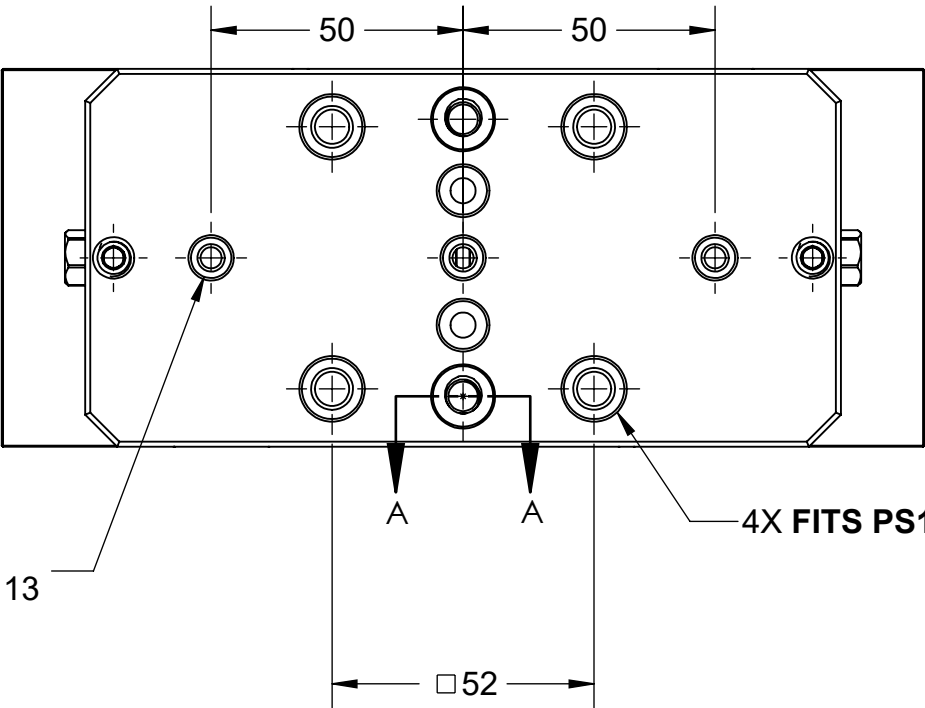
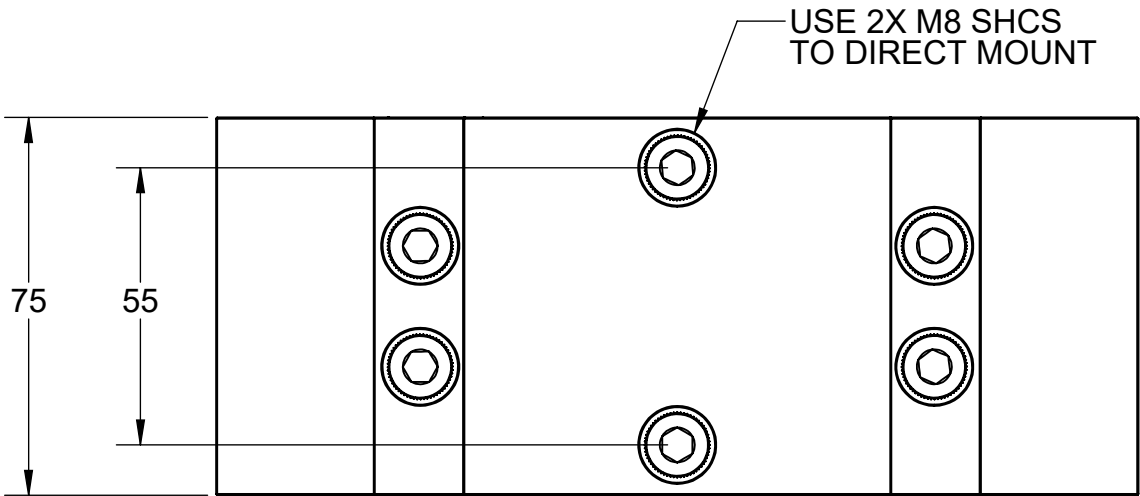
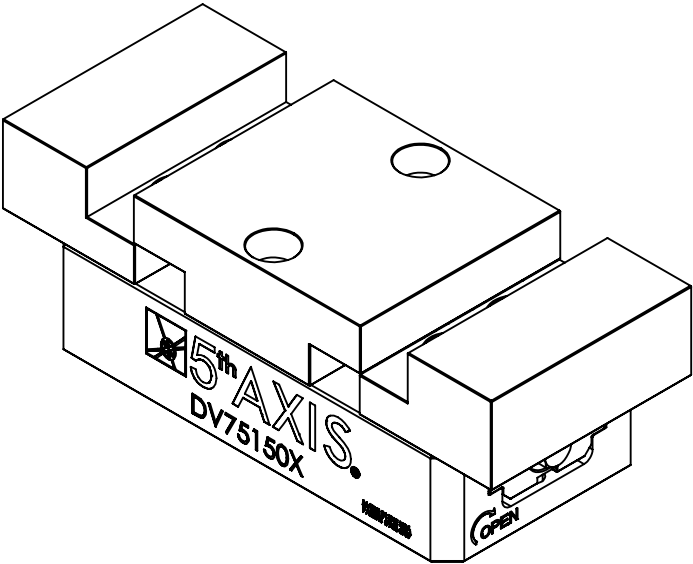
3

2

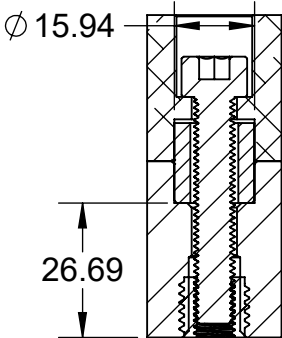
1

TECHNICAL DATA	DV75150-J2
JAW WIDTH	2.95" (75mm)
BASE LENGTH	5.91" (150mm)
MAXIMUM TORQUE (JAW BOLT)	20 ft-lb (27 Nm)
CLAMPING FORCE	5000 lbf @ 45 ft-lb (22 kN @ 60 Nm)
MAXIMUM TORQUE (LEADSCREW)	45 ft-lb (60 Nm)
MAXIMUM TORQUE (MOUNTING BOLT)	25 ft-lb (34 Nm)
SELF-CENTERING ACCURACY	± 0.0005" (± 12.7µm)

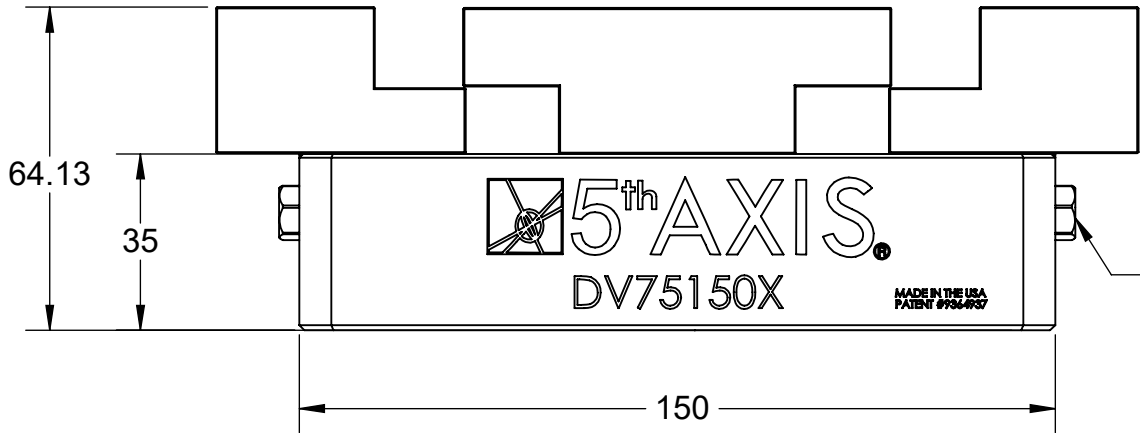
# DV75150-J2


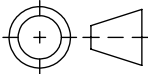


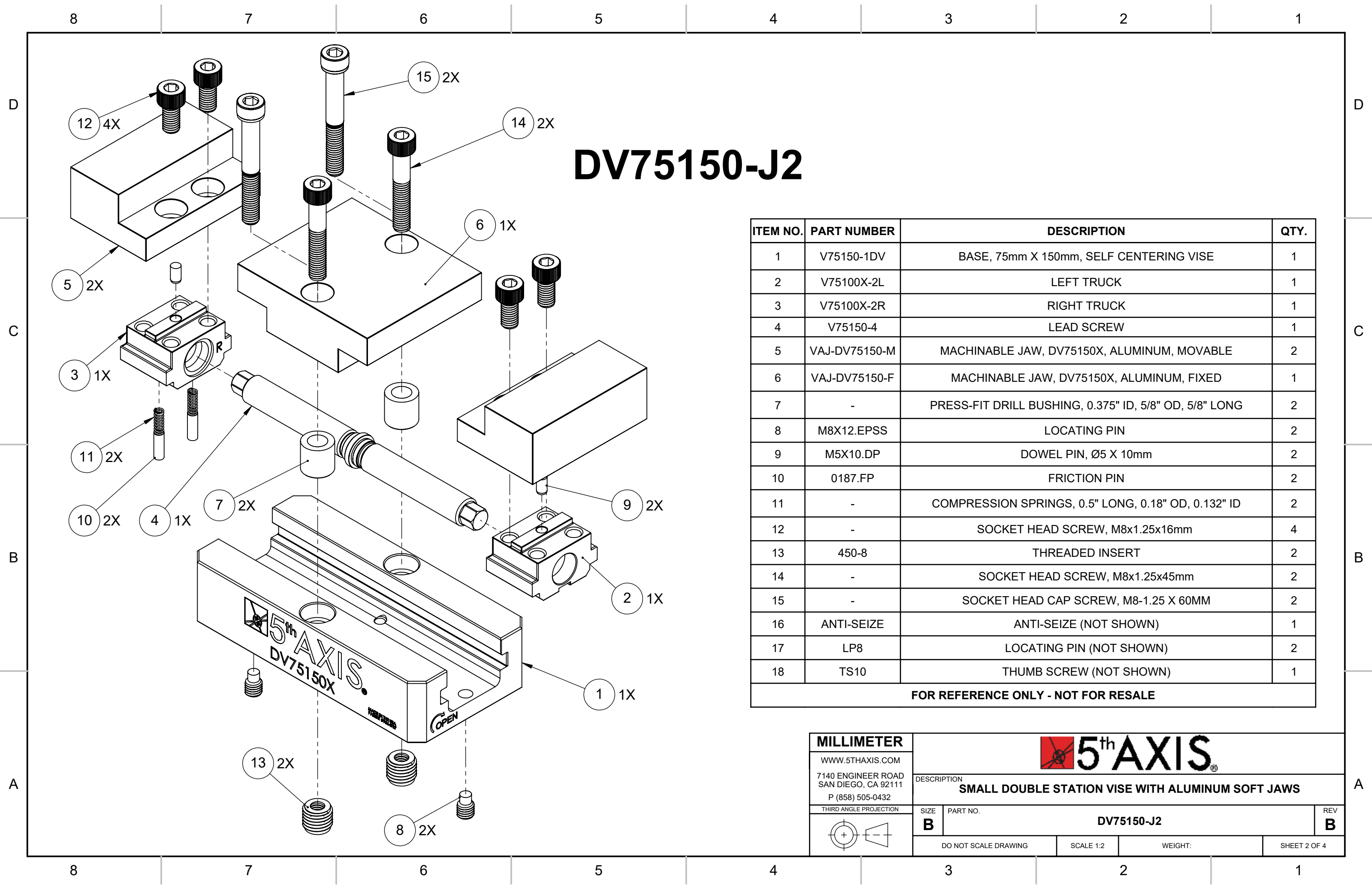
3X Ø 4.20 THRU ALL  
□ Ø 8.01±0.01 ▽ 4.13  
FITS LP8



SECTION A-A



<b>MILLIMETER</b>				
WWW.5THAXIS.COM		DESCRIPTION		
7140 ENGINEER ROAD		SMALL DOUBLE STATION VISE WITH ALUMINUM SOFT JAWS		
SAN DIEGO, CA 92111		REV		
P (858) 505-0432		B		
THIRD ANGLE PROJECTION		SIZE	PART NO.	REV
		B	DV75150-J2	B
DO NOT SCALE DRAWING		SCALE 1:1.5	WEIGHT:	SHEET 1 OF 4



# DV75150-J2

ITEM NO.	PART NUMBER	DESCRIPTION	QTY.
1	V75150-1DV	BASE, 75mm X 150mm, SELF CENTERING VISE	1
2	V75100X-2L	LEFT TRUCK	1
3	V75100X-2R	RIGHT TRUCK	1
4	V75150-4	LEAD SCREW	1
5	VAJ-DV75150-M	MACHINABLE JAW, DV75150X, ALUMINUM, MOVABLE	2
6	VAJ-DV75150-F	MACHINABLE JAW, DV75150X, ALUMINUM, FIXED	1
7	-	PRESS-FIT DRILL BUSHING, 0.375" ID, 5/8" OD, 5/8" LONG	2
8	M8X12.EPSS	LOCATING PIN	2
9	M5X10.DP	DOWEL PIN, Ø5 X 10mm	2
10	0187.FP	FRICTION PIN	2
11	-	COMPRESSION SPRINGS, 0.5" LONG, 0.18" OD, 0.132" ID	2
12	-	SOCKET HEAD SCREW, M8x1.25x16mm	4
13	450-8	THREADED INSERT	2
14	-	SOCKET HEAD SCREW, M8x1.25x45mm	2
15	-	SOCKET HEAD CAP SCREW, M8-1.25 X 60MM	2
16	ANTI-SEIZE	ANTI-SEIZE (NOT SHOWN)	1
17	LP8	LOCATING PIN (NOT SHOWN)	2
18	TS10	THUMB SCREW (NOT SHOWN)	1
FOR REFERENCE ONLY - NOT FOR RESALE			

MILLIMETER

WWW.5THAXIS.COM

7140 ENGINEER ROAD  
SAN DIEGO, CA 92111

P (858) 505-0432

THIRD ANGLE PROJECTION

DESCRIPTION

SMALL DOUBLE STATION VISE WITH ALUMINUM SOFT JAWS

SIZE

B

PART NO.

DV75150-J2

REV

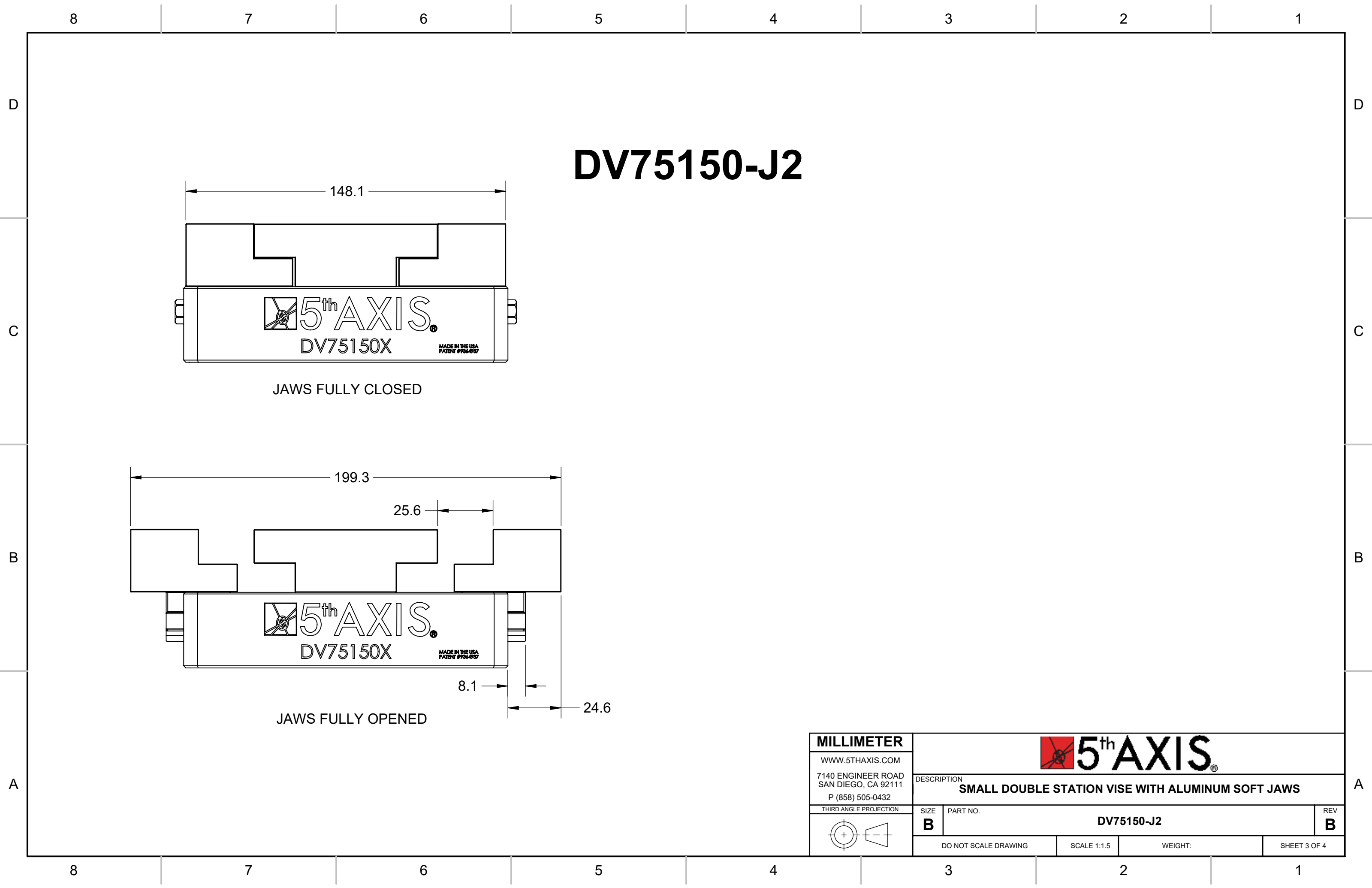
B

DO NOT SCALE DRAWING

SCALE 1:2

WEIGHT:


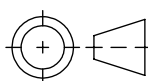
SHEET 2 OF 4



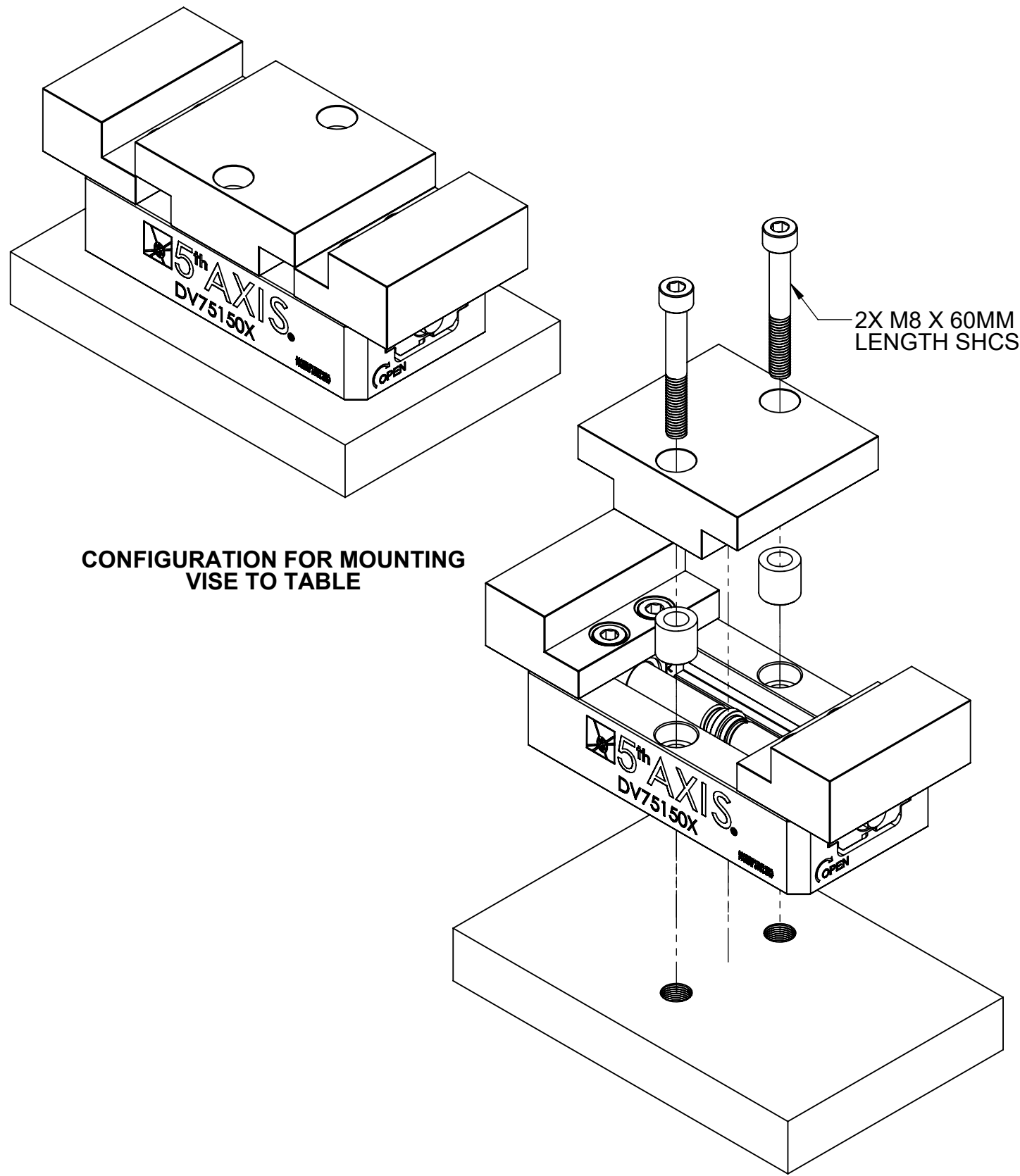
# DV75150-J2

JAWS FULLY CLOSED

JAWS FULLY OPENED

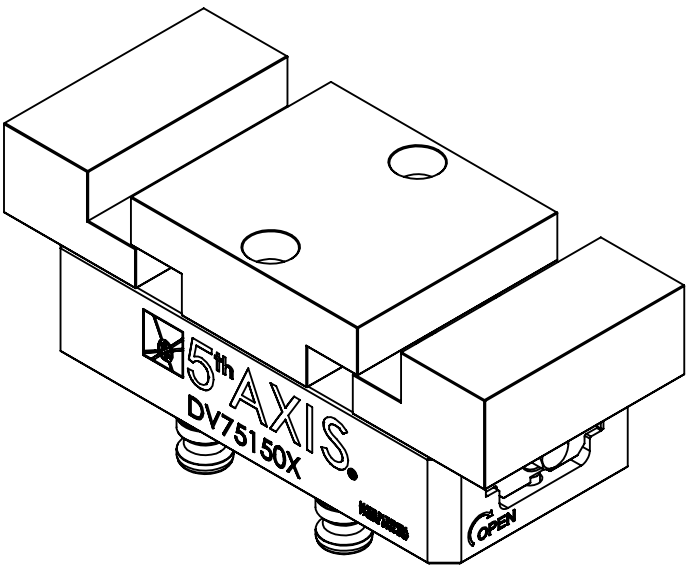
MILLIMETER		 5 <sup>th</sup> AXIS®			
WWW.5THAXIS.COM		DESCRIPTION SMALL DOUBLE STATION VISE WITH ALUMINUM SOFT JAWS			
7140 ENGINEER ROAD SAN DIEGO, CA 92111 P (858) 505-0432					
THIRD ANGLE PROJECTION		SIZE B	PART NO. DV75150-J2		REV B
		DO NOT SCALE DRAWING		SCALE 1:1.5	WEIGHT:
					SHEET 3 OF 4

# DV75150-J2



CONFIGURATION FOR MOUNTING  
VISE TO TABLE

2X M8 X 60MM  
LENGTH SHCS



CONFIGURATION FOR MOUNTING  
VISE TO ROCKLOCK SYSTEM

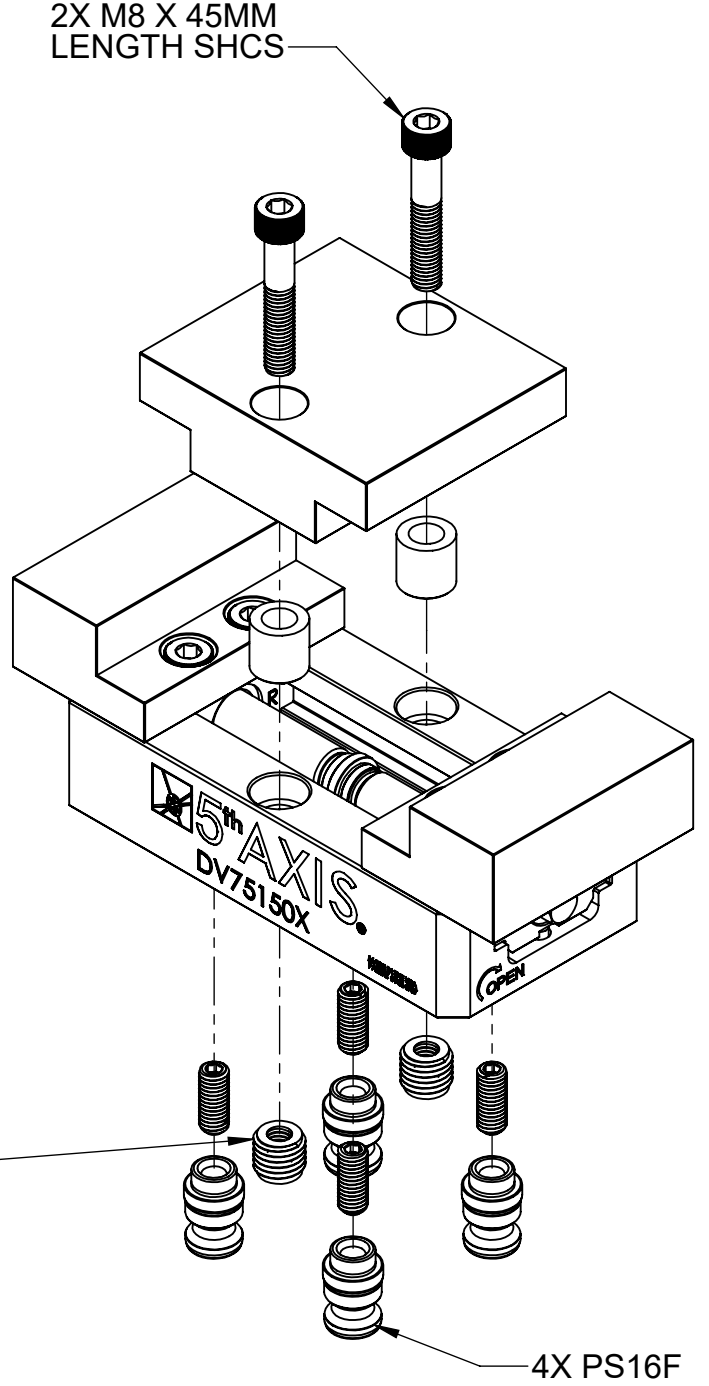
2X M8 X 45MM  
LENGTH SHCS

2X 450-8 THREADED INSERT


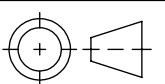
\*IT IS RECOMMENDED TO INSTALL  
USING EZ-LOK DRIVE TOOL.

ENSURE INSERTS ARE NOT  
PROTRUDING PAST BOTTOM  
OF VISE BASE.

REFER TO EZ-LOK INSTALLATION  
INSTRUCTIONS FOR MORE INFO.



4X PS16F

MILLIMETER					
WWW.5THAXIS.COM		DESCRIPTION <b>SMALL DOUBLE STATION VISE WITH ALUMINUM SOFT JAWS</b>			
7140 ENGINEER ROAD SAN DIEGO, CA 92111 P (858) 505-0432					
THIRD ANGLE PROJECTION					
		SIZE <b>B</b>	PART NO. <b>DV75150-J2</b>		REV <b>B</b>
DO NOT SCALE DRAWING		SCALE 1:2		WEIGHT:	
SHEET 4 OF 4					