

8

7

6

5

4

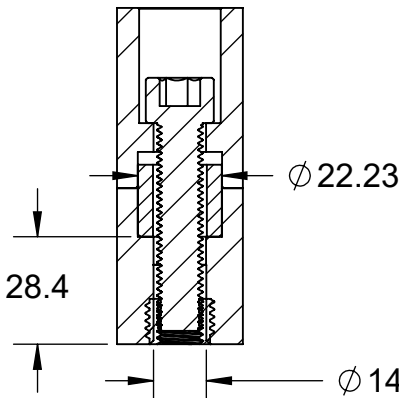
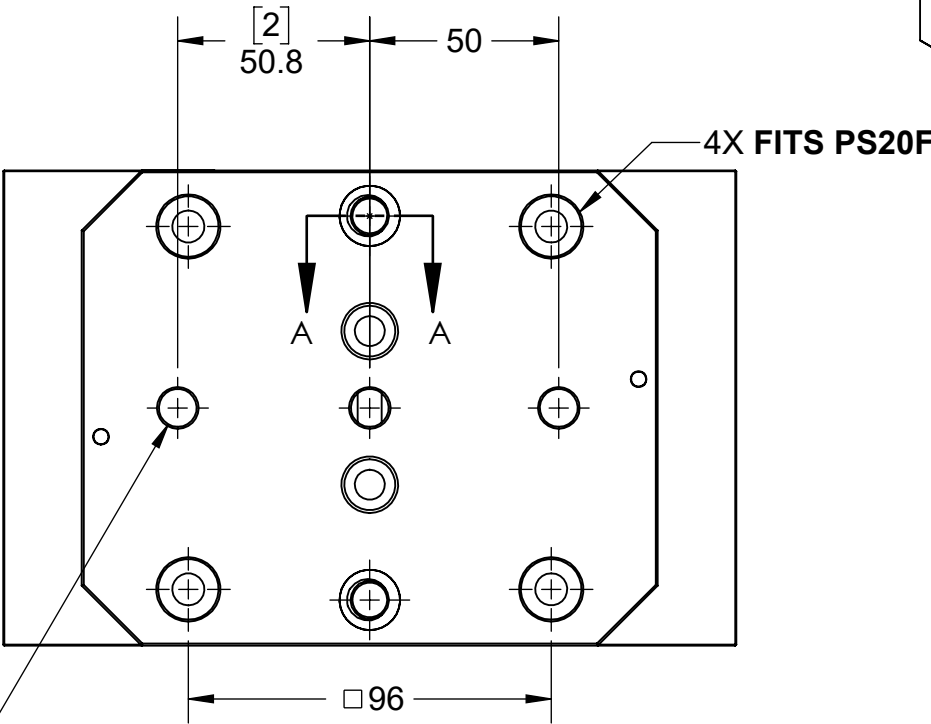
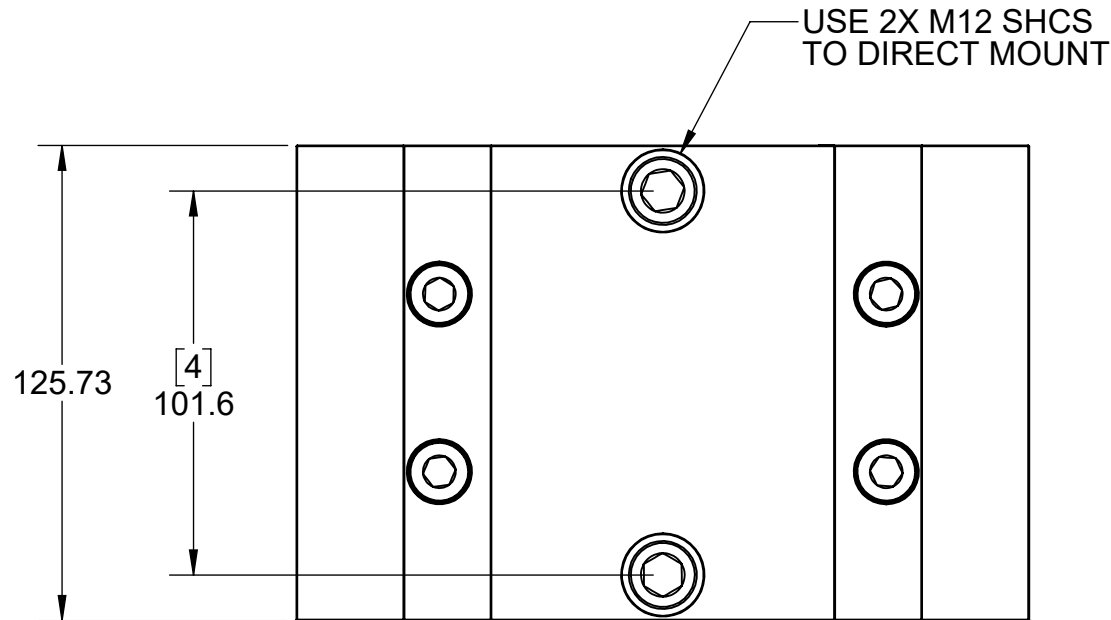
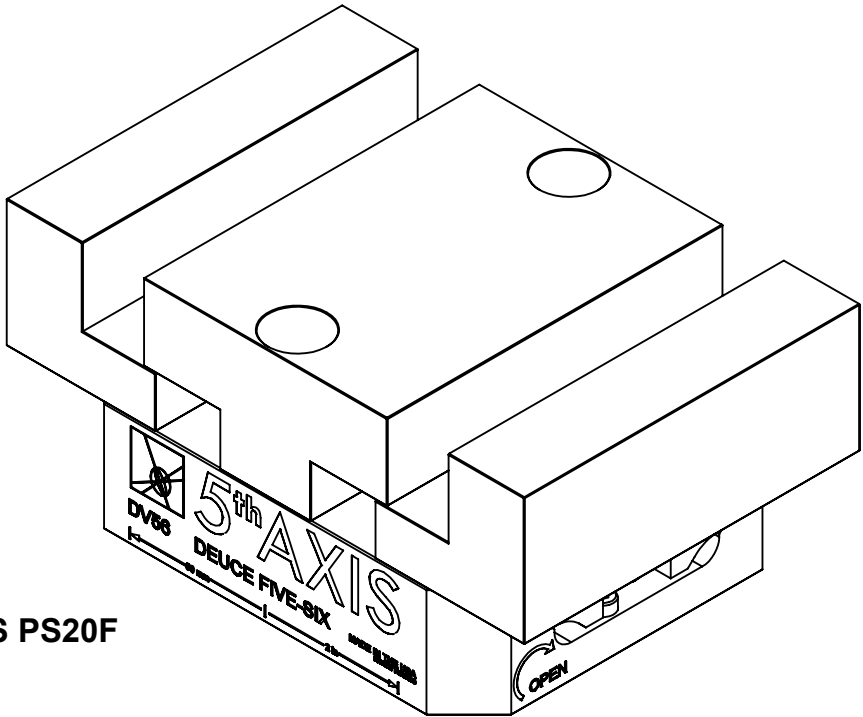
3

2

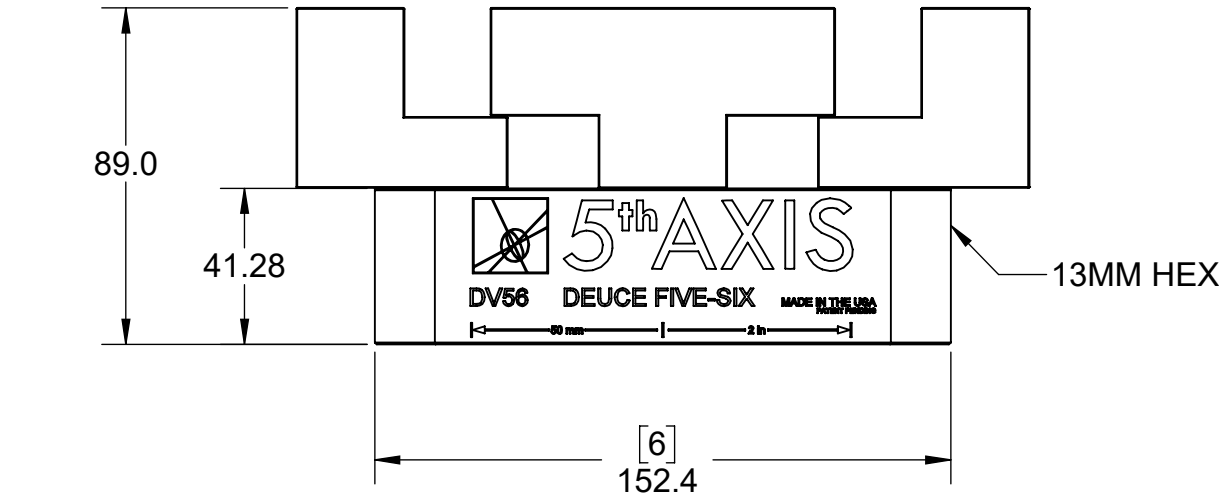
1


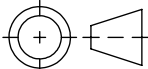
TECHNICAL DATA	DV56-J3
JAW WIDTH	125.73mm
BASE LENGTH	152.4mm
MAXIMUM TORQUE (JAW BOLT)	47 Nm
CLAMPING FORCE	25 kN @ 75 Nm
MAXIMUM TORQUE (LEADSCREW)	75 Nm
MAXIMUM TORQUE (MOUNTING BOLT)	47 Nm
SELF-CENTERING ACCURACY	± 12.7 µm

DV56-J3



3X $\phi 10.013 \pm 0.005 \nabla 7.6$
M6X1.0 $\nabla 5.1$
FITS LP10



MILLIMETER				
WWW.5THAXIS.COM		DESCRIPTION		
7140 ENGINEER ROAD SAN DIEGO, CA 92111 P (858) 505-0432		MEDIUM DOUBLE STATION VISE WITH STEEL SOFT JAWS		
THIRD ANGLE PROJECTION		SIZE	PART NO.	REV
		B	DV56-J3	B
DO NOT SCALE DRAWING		SCALE 1:2	WEIGHT:	SHEET 1 OF 4

8

7

6

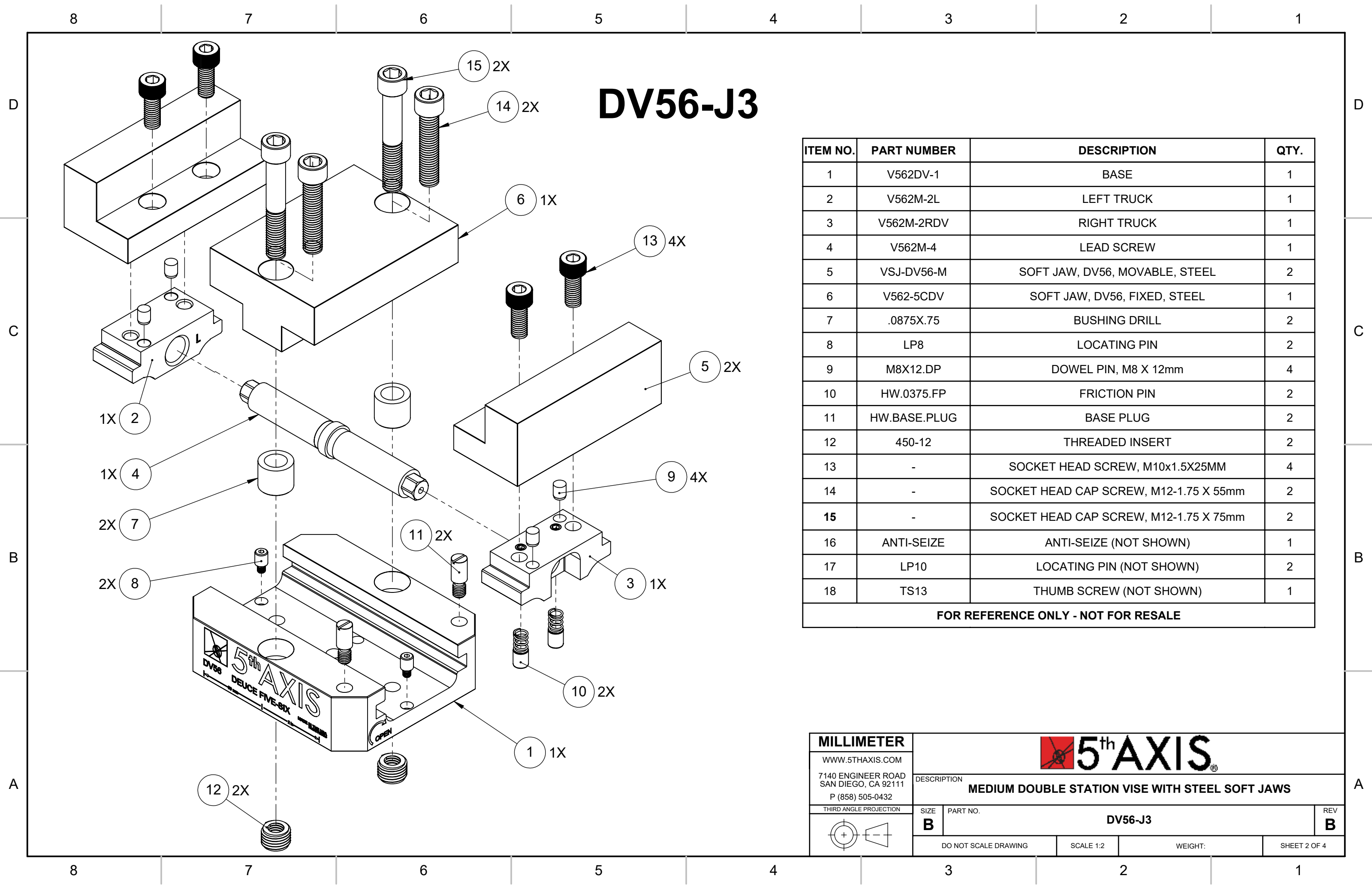
5

4

3

2

1



DV56-J3

ITEM NO.	PART NUMBER	DESCRIPTION	QTY.
1	V562DV-1	BASE	1
2	V562M-2L	LEFT TRUCK	1
3	V562M-2RDV	RIGHT TRUCK	1
4	V562M-4	LEAD SCREW	1
5	VSJ-DV56-M	SOFT JAW, DV56, MOVABLE, STEEL	2
6	V562-5CDV	SOFT JAW, DV56, FIXED, STEEL	1
7	.0875X.75	BUSHING DRILL	2
8	LP8	LOCATING PIN	2
9	M8X12.DP	DOWEL PIN, M8 X 12mm	4
10	HW.0375.FP	FRICTION PIN	2
11	HW.BASE.PLUG	BASE PLUG	2
12	450-12	THREADED INSERT	2
13	-	SOCKET HEAD SCREW, M10x1.5X25MM	4
14	-	SOCKET HEAD CAP SCREW, M12-1.75 X 55mm	2
15	-	SOCKET HEAD CAP SCREW, M12-1.75 X 75mm	2
16	ANTI-SEIZE	ANTI-SEIZE (NOT SHOWN)	1
17	LP10	LOCATING PIN (NOT SHOWN)	2
18	TS13	THUMB SCREW (NOT SHOWN)	1
FOR REFERENCE ONLY - NOT FOR RESALE			

MILLIMETER

WWW.5THAXIS.COM

7140 ENGINEER ROAD
SAN DIEGO, CA 92111

P (858) 505-0432

THIRD ANGLE PROJECTION

DESCRIPTION

MEDIUM DOUBLE STATION VISE WITH STEEL SOFT JAWS

SIZE

B

PART NO.

DV56-J3

REV

B

DO NOT SCALE DRAWING

SCALE 1:2

WEIGHT:

SHEET 2 OF 4

D

C

B

A

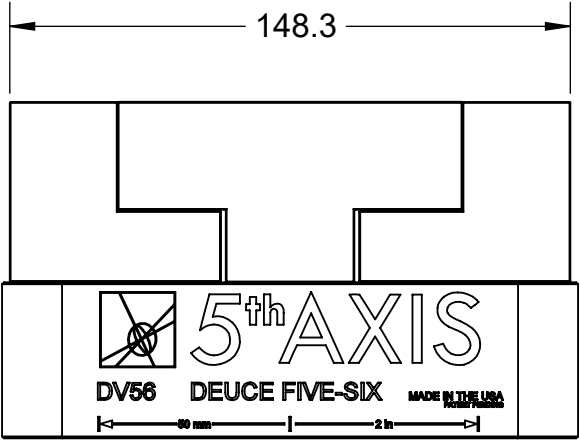
D

C

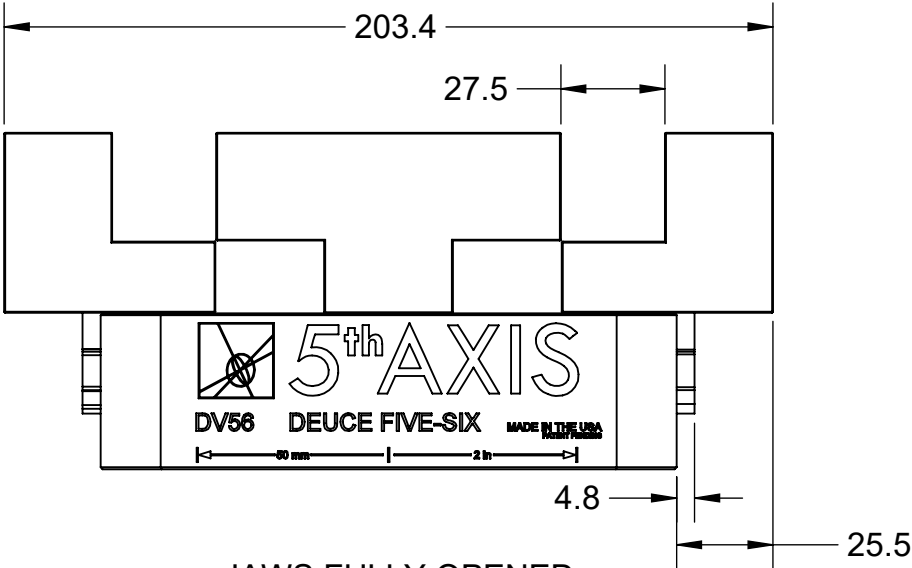
B

A


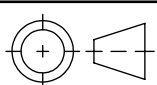
DV56-J3



JAWS FULLY CLOSED

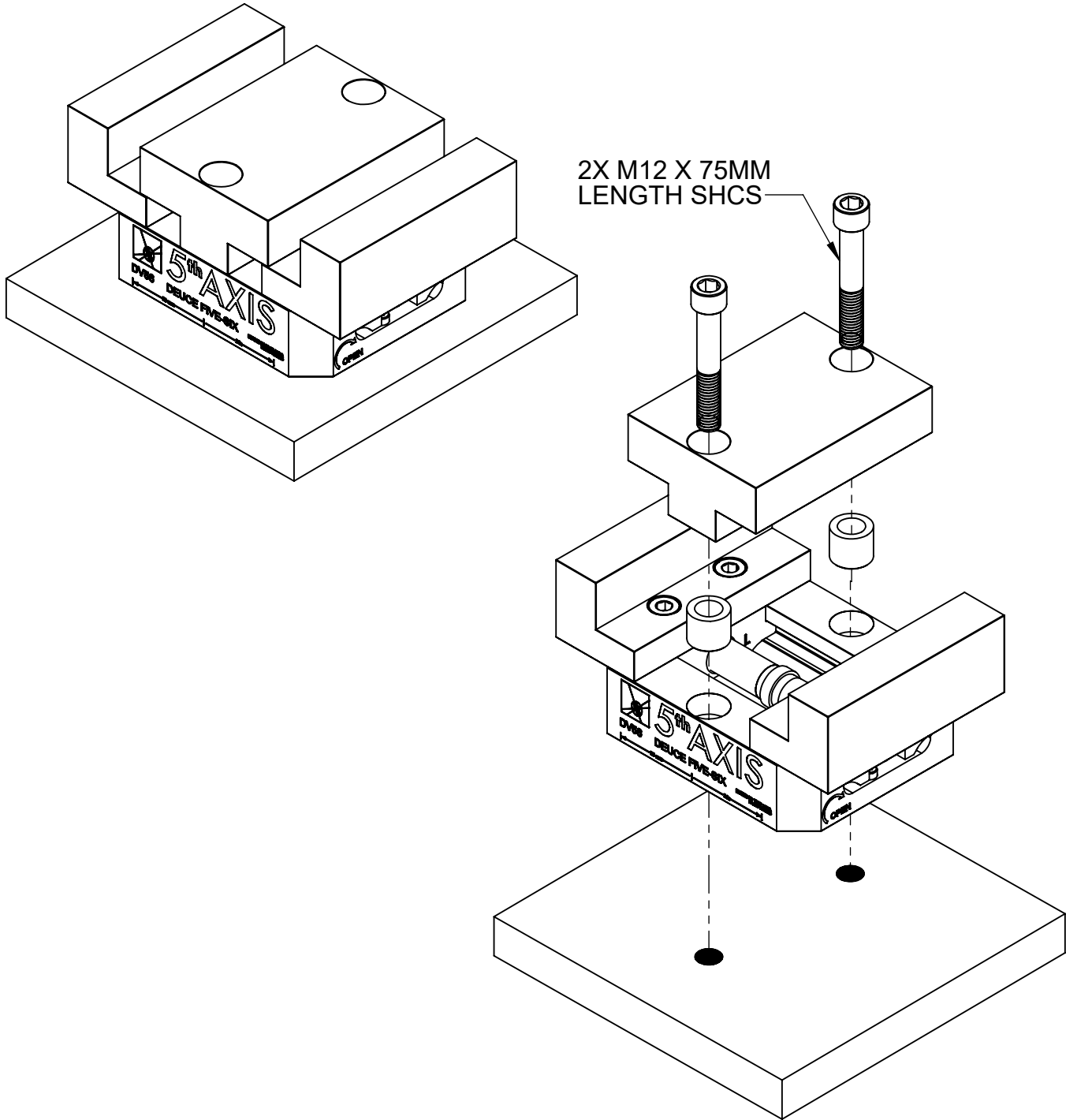


JAWS FULLY OPENED

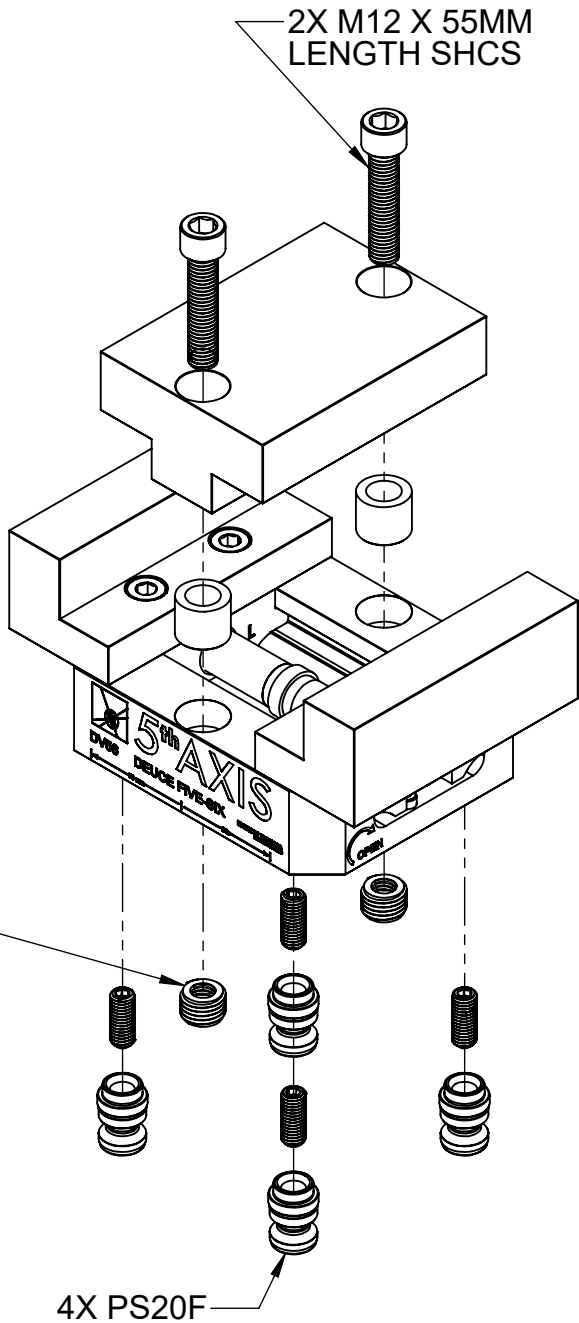
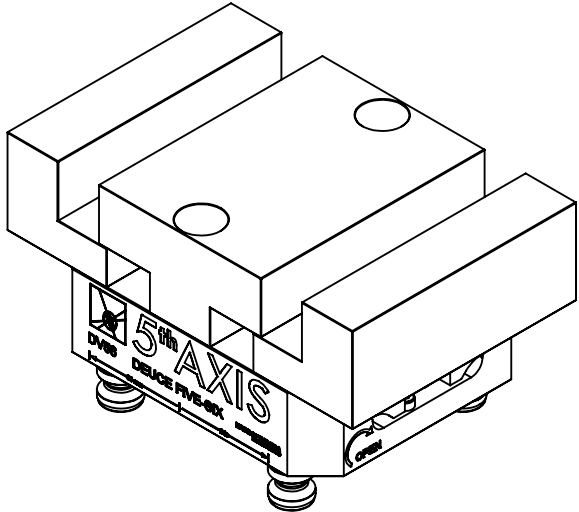
MILLIMETER		 5 th AXIS®			
WWW.5THAXIS.COM		DESCRIPTION MEDIUM DOUBLE STATION VISE WITH STEEL SOFT JAWS			
7140 ENGINEER ROAD SAN DIEGO, CA 92111 P (858) 505-0432					
THIRD ANGLE PROJECTION		SIZE B	PART NO. DV56-J3		REV B
		DO NOT SCALE DRAWING	SCALE 1:2	WEIGHT:	SHEET 3 OF 4

DV56-J3

CONFIGURATION FOR MOUNTING
VISE TO TABLE



CONFIGURATION FOR MOUNTING
VISE TO ROCKLOCK SYSTEM




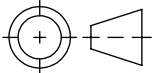
2X 450-12 THREADED INSERT

*IT IS RECOMMENDED TO INSTALL
USING EZ-LOK DRIVE TOOL.

ENSURE INSERTS ARE NOT
PROTRUDING PAST BOTTOM
OF VISE BASE.

REFER TO EZ-LOK INSTALLATION
INSTRUCTIONS FOR MORE INFO.

4X PS20F

MILLIMETER				
WWW.5THAXIS.COM		DESCRIPTION		
7140 ENGINEER ROAD SAN DIEGO, CA 92111 P (858) 505-0432		MEDIUM DOUBLE STATION VISE WITH STEEL SOFT JAWS		
THIRD ANGLE PROJECTION		SIZE	PART NO.	REV
		B	DV56-J3	B
DO NOT SCALE DRAWING		SCALE 1:2	WEIGHT:	SHEET 4 OF 4