

8

7

6

5

4

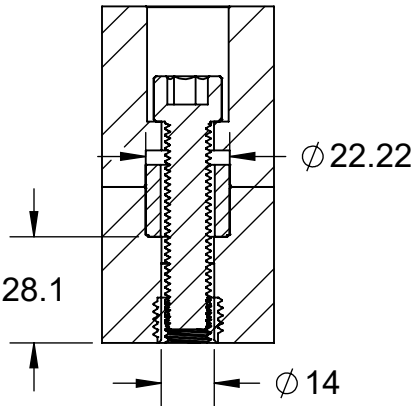
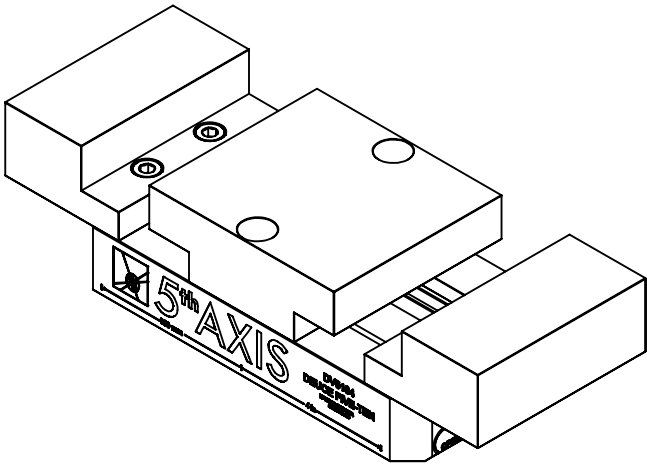
3

2

1

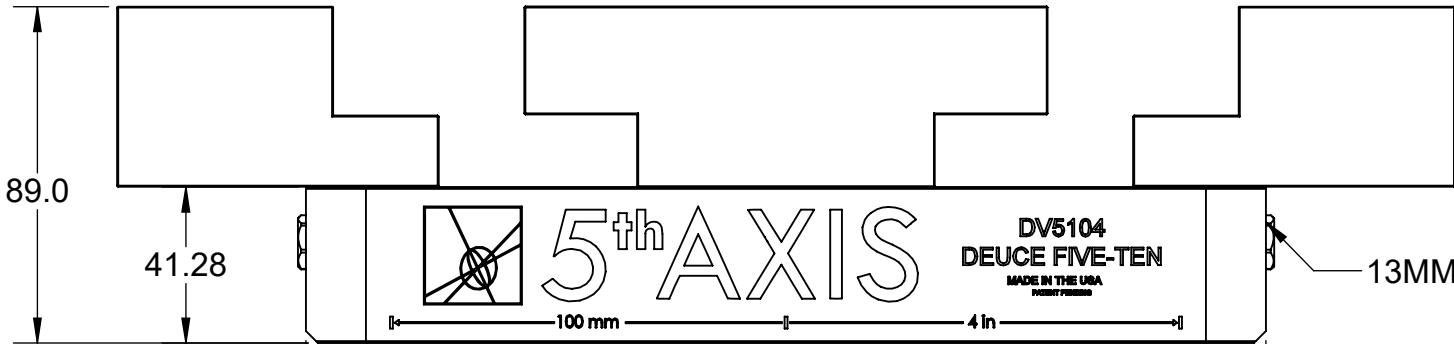
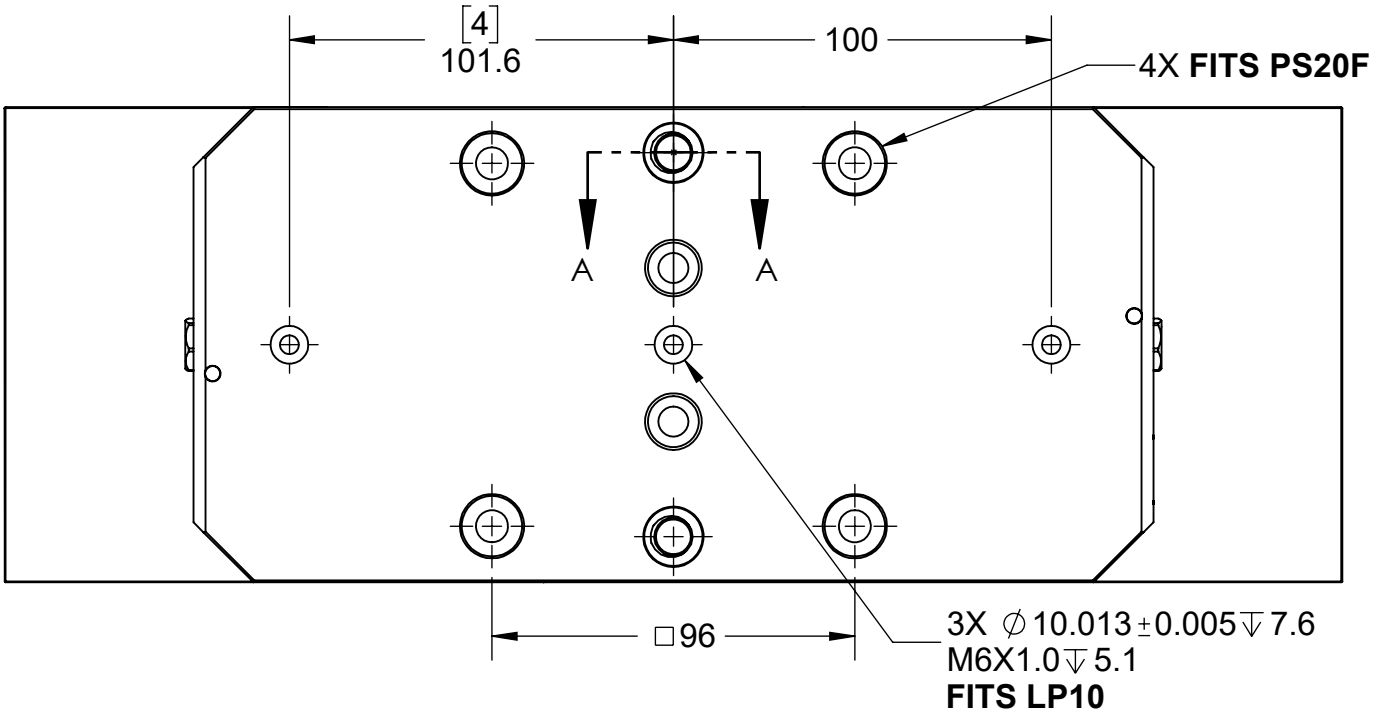
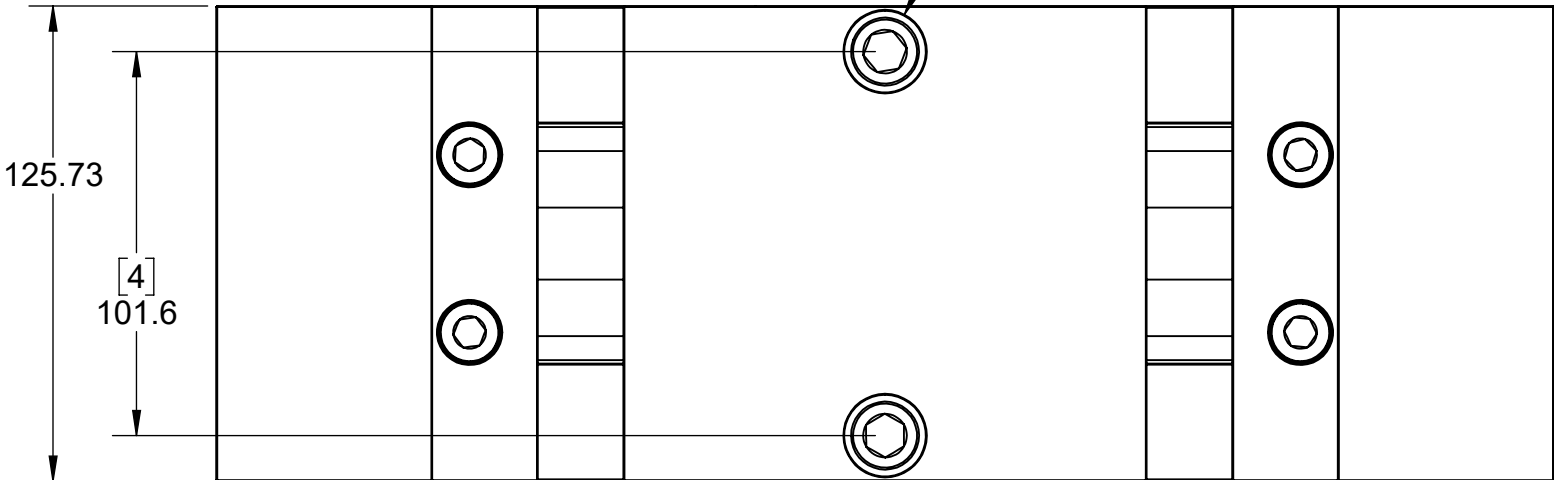
TECHNICAL DATA	DV510-J3
JAW WIDTH	125.73mm
BASE LENGTH	254.0mm
MAXIMUM TORQUE (JAW BOLT)	47 Nm
CLAMPING FORCE	25 kN @ 75 Nm
MAXIMUM TORQUE (LEADSCREW)	75 Nm
MAXIMUM TORQUE (MOUNTING BOLT)	47 Nm
SELF-CENTERING ACCURACY	± 12.7 µm

# DV510-J3




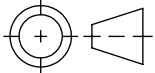
SECTION A-A

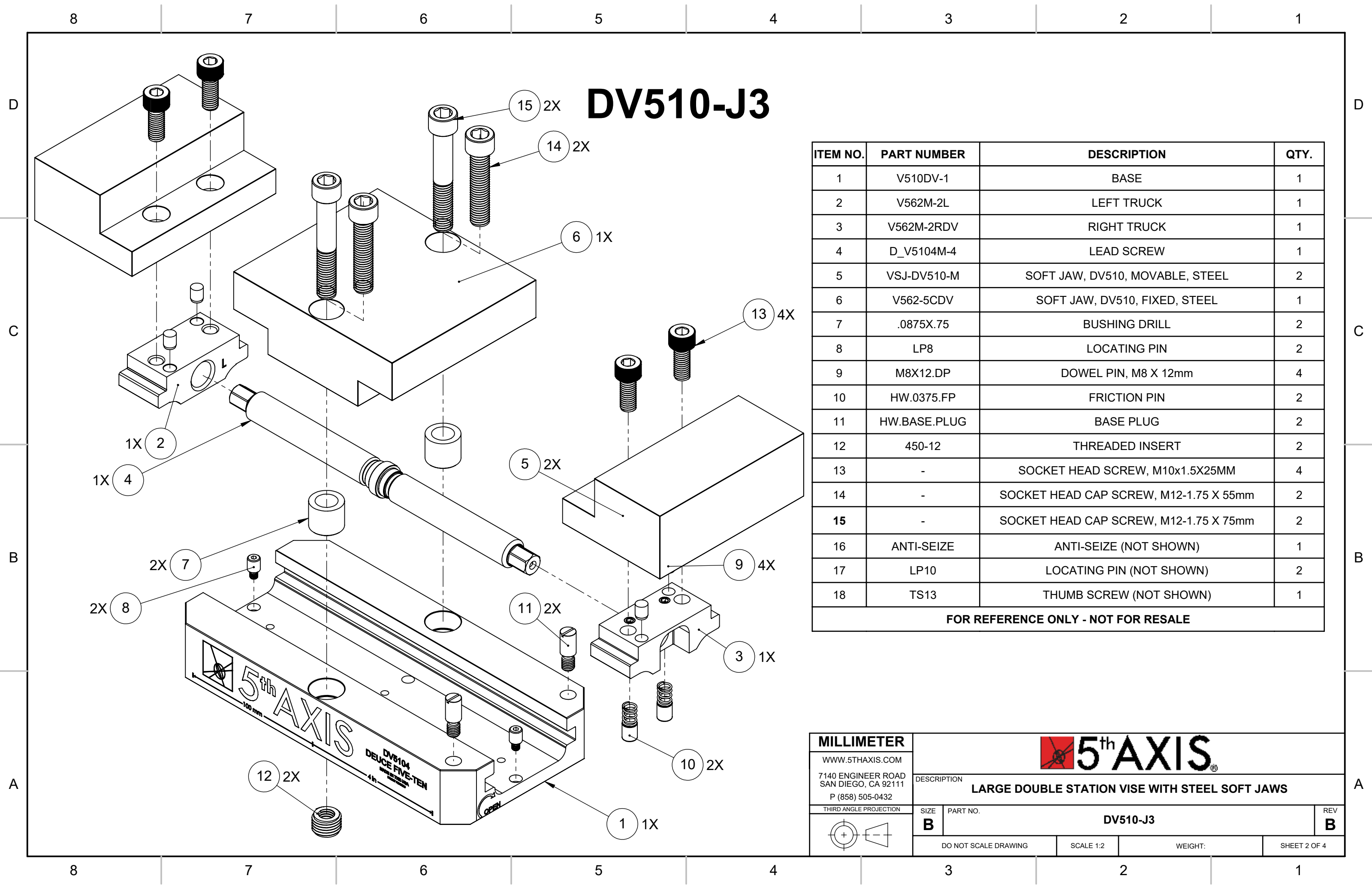
USE 2X M12 SHCS  
TO DIRECT MOUNT



13MM HEX

[10]  
254.0

<b>MILLIMETER</b>				
WWW.5THAXIS.COM		DESCRIPTION		
7140 ENGINEER ROAD SAN DIEGO, CA 92111 P (858) 505-0432		LARGE DOUBLE STATION VISE WITH STEEL SOFT JAWS		
THIRD ANGLE PROJECTION		SIZE <b>B</b>	PART NO. <b>DV510-J3</b>	REV <b>B</b>
		DO NOT SCALE DRAWING	SCALE 1:2	WEIGHT:
		SHEET 1 OF 4		



# DV510-J3

ITEM NO.	PART NUMBER	DESCRIPTION	QTY.
1	V510DV-1	BASE	1
2	V562M-2L	LEFT TRUCK	1
3	V562M-2RDV	RIGHT TRUCK	1
4	D_V5104M-4	LEAD SCREW	1
5	VSJ-DV510-M	SOFT JAW, DV510, MOVABLE, STEEL	2
6	V562-5CDV	SOFT JAW, DV510, FIXED, STEEL	1
7	.0875X.75	BUSHING DRILL	2
8	LP8	LOCATING PIN	2
9	M8X12.DP	DOWEL PIN, M8 X 12mm	4
10	HW.0375.FP	FRICTION PIN	2
11	HW.BASE.PLUG	BASE PLUG	2
12	450-12	THREADED INSERT	2
13	-	SOCKET HEAD SCREW, M10x1.5X25MM	4
14	-	SOCKET HEAD CAP SCREW, M12-1.75 X 55mm	2
15	-	SOCKET HEAD CAP SCREW, M12-1.75 X 75mm	2
16	ANTI-SEIZE	ANTI-SEIZE (NOT SHOWN)	1
17	LP10	LOCATING PIN (NOT SHOWN)	2
18	TS13	THUMB SCREW (NOT SHOWN)	1
FOR REFERENCE ONLY - NOT FOR RESALE			

MILLIMETER

WWW.5THAXIS.COM

7140 ENGINEER ROAD  
SAN DIEGO, CA 92111

P (858) 505-0432

THIRD ANGLE PROJECTION

DESCRIPTION  
LARGE DOUBLE STATION VISE WITH STEEL SOFT JAWS

SIZE  
B

PART NO.  
DV510-J3

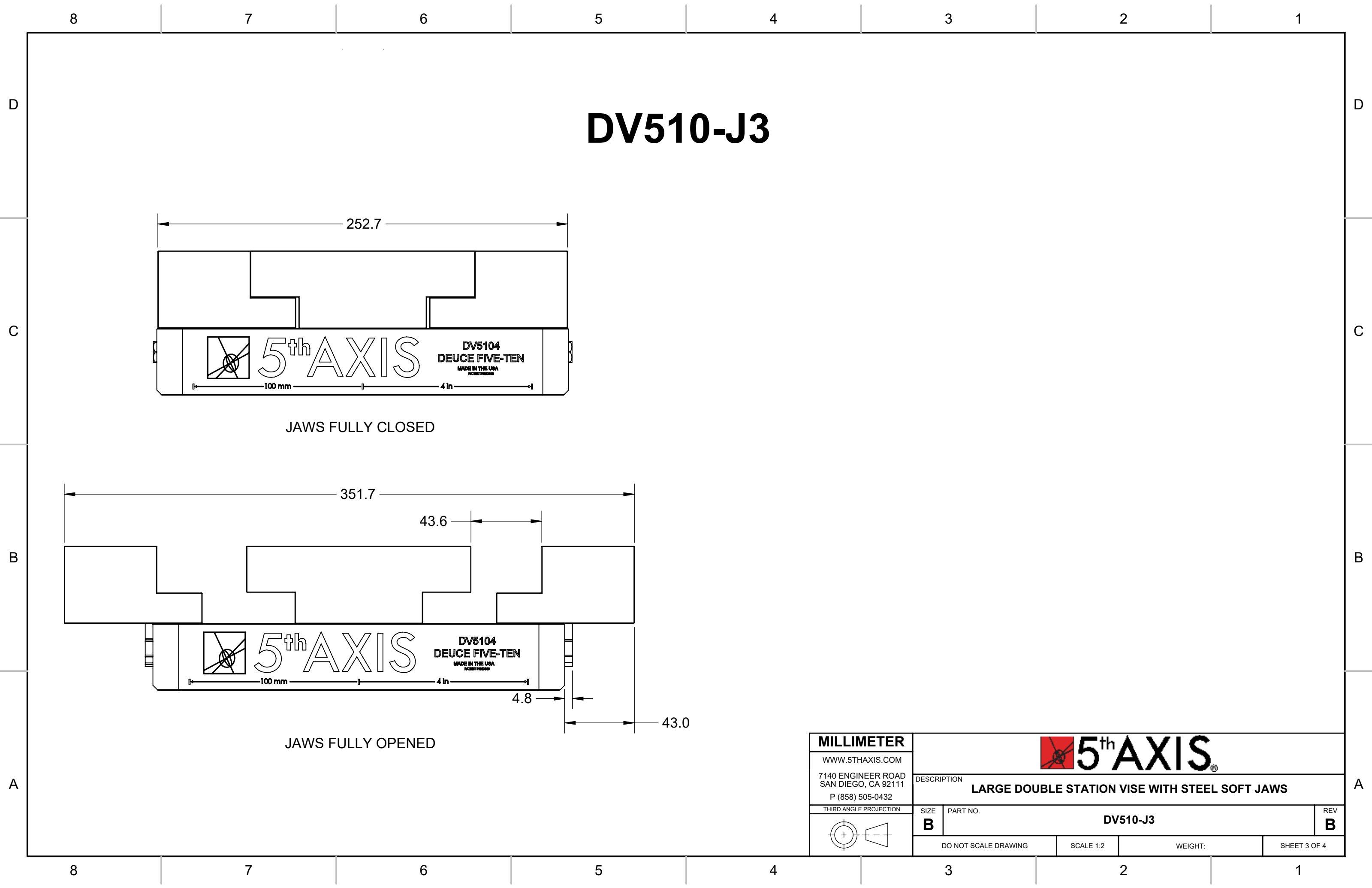
REV  
B


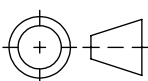
DO NOT SCALE DRAWING

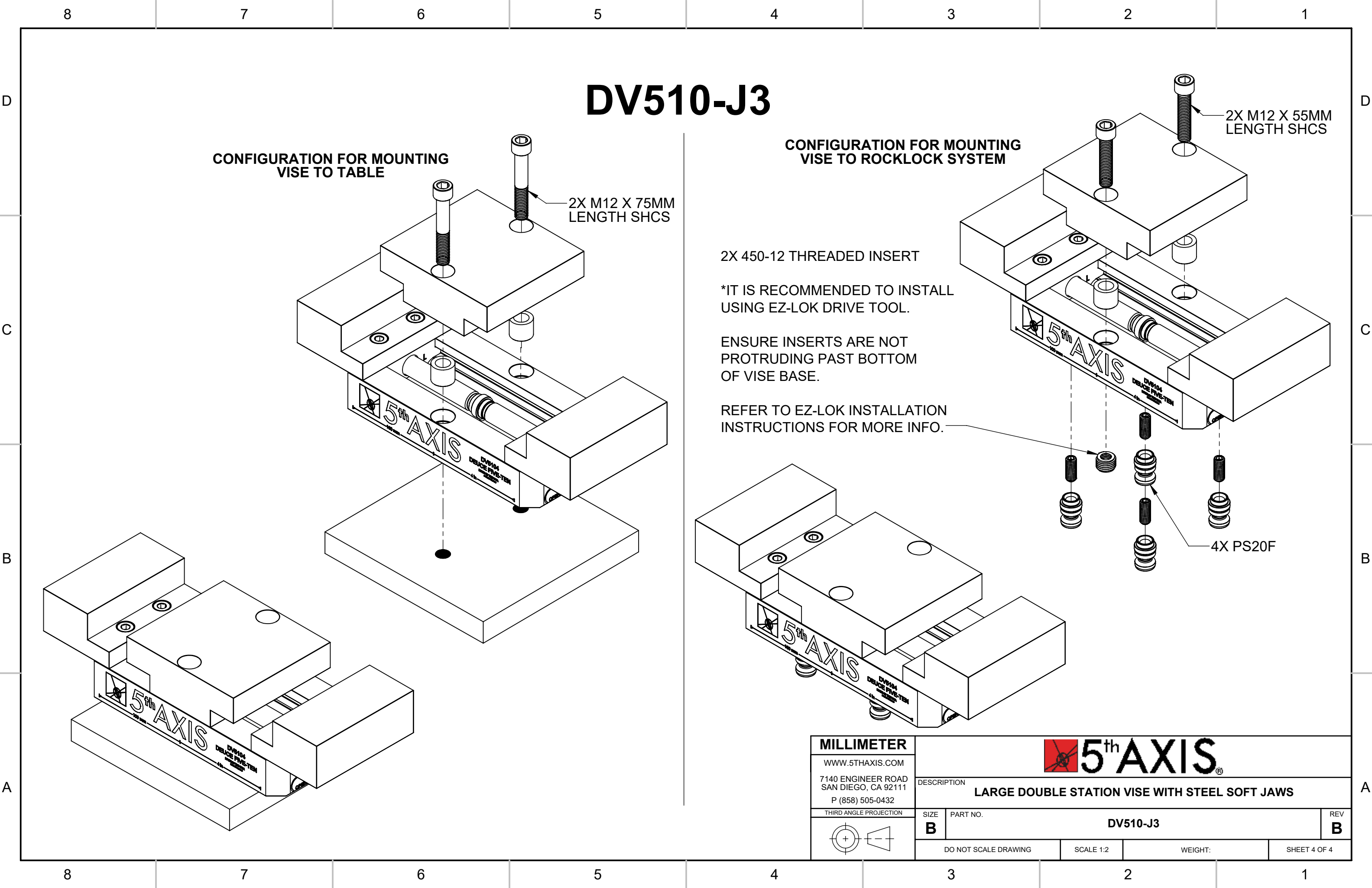
SCALE 1:2

WEIGHT:

SHEET 2 OF 4



MILLIMETER		 5 <sup>th</sup> AXIS®		
WWW.5THAXIS.COM		DESCRIPTION  LARGE DOUBLE STATION VISE WITH STEEL SOFT JAWS		
7140 ENGINEER ROAD SAN DIEGO, CA 92111 P (858) 505-0432				
THIRD ANGLE PROJECTION		SIZE <b>B</b>	PART NO.  DV510-J3	REV <b>B</b>
		DO NOT SCALE DRAWING	SCALE 1:2	WEIGHT:
				SHEET 3 OF 4



# DV510-J3

## CONFIGURATION FOR MOUNTING VISE TO TABLE

2X M12 X 75MM  
LENGTH SHCS

## CONFIGURATION FOR MOUNTING VISE TO ROCKLOCK SYSTEM

2X 450-12 THREADED INSERT

\*IT IS RECOMMENDED TO INSTALL  
USING EZ-LOK DRIVE TOOL.

ENSURE INSERTS ARE NOT  
PROTRUDING PAST BOTTOM  
OF VISE BASE.

REFER TO EZ-LOK INSTALLATION  
INSTRUCTIONS FOR MORE INFO.

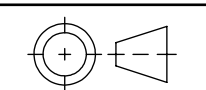
2X M12 X 55MM  
LENGTH SHCS

4X PS20F

MILLIMETER

WWW.5THAXIS.COM  
7140 ENGINEER ROAD  
SAN DIEGO, CA 92111  
P (858) 505-0432

THIRD ANGLE PROJECTION



**5<sup>th</sup> AXIS**

DESCRIPTION

**LARGE DOUBLE STATION VISE WITH STEEL SOFT JAWS**

SIZE  
**B**

PART NO.

**DV510-J3**

REV  
**B**

DO NOT SCALE DRAWING

SCALE 1:2

WEIGHT:

SHEET 4 OF 4