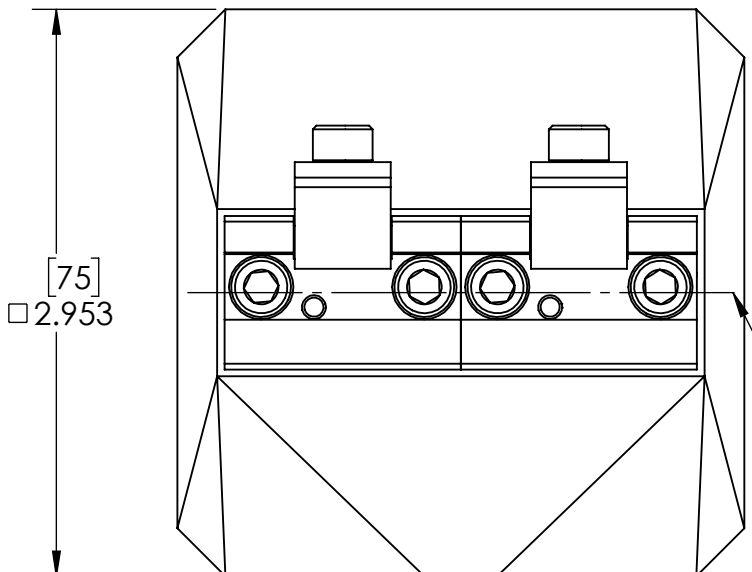
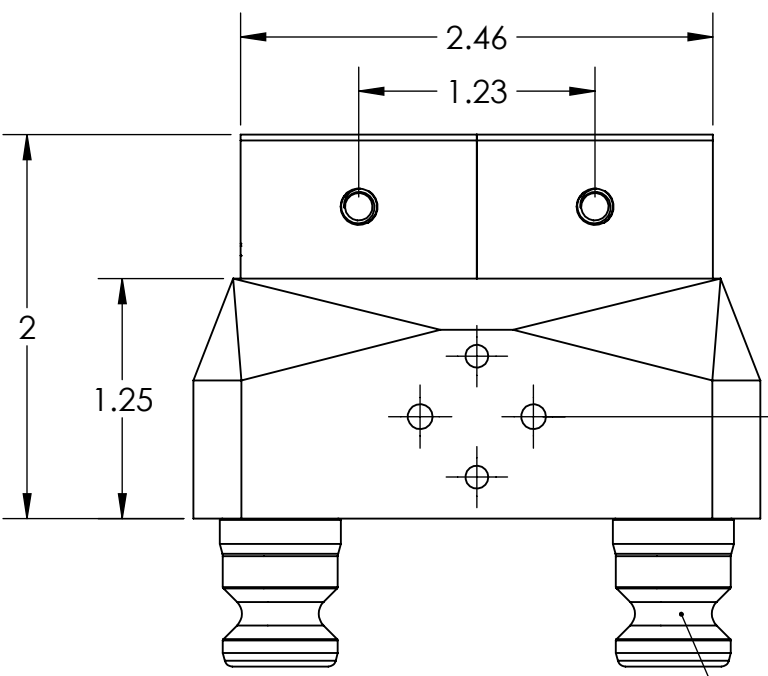
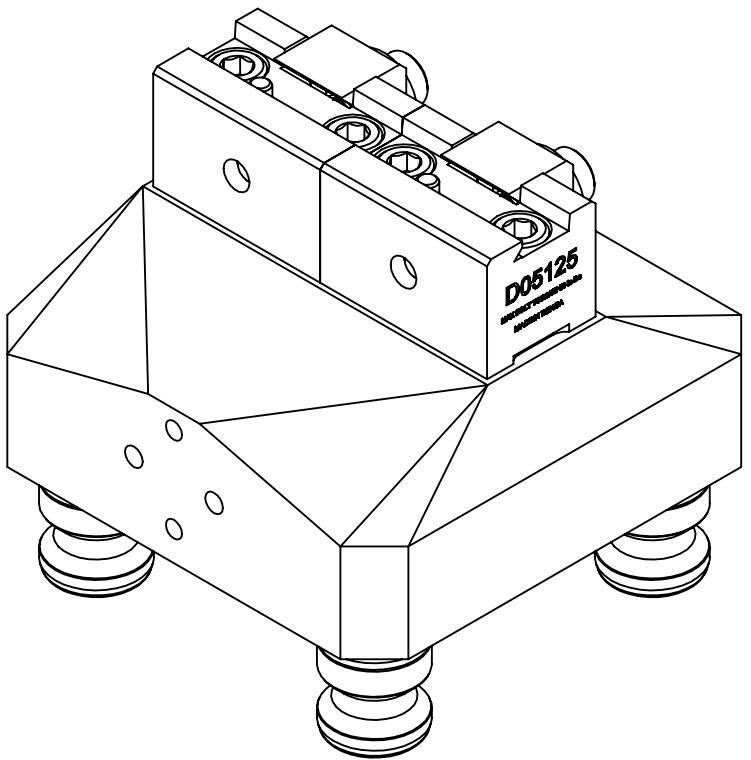
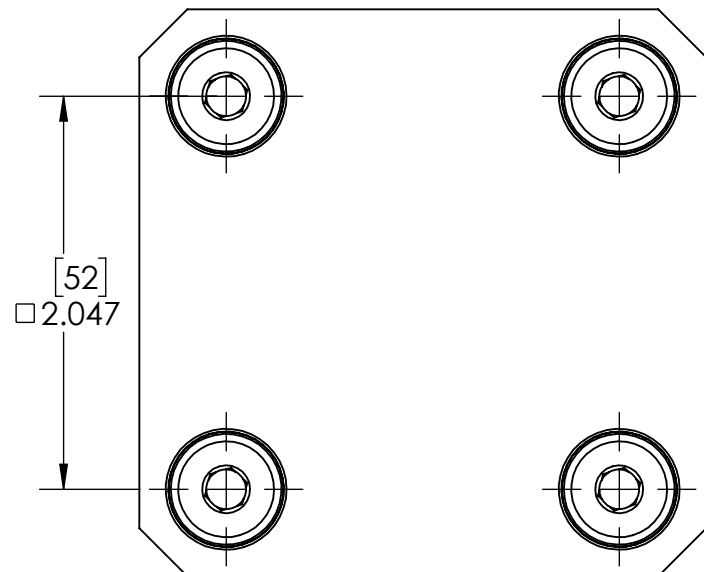


# A52-2D05125


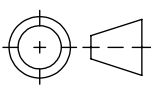


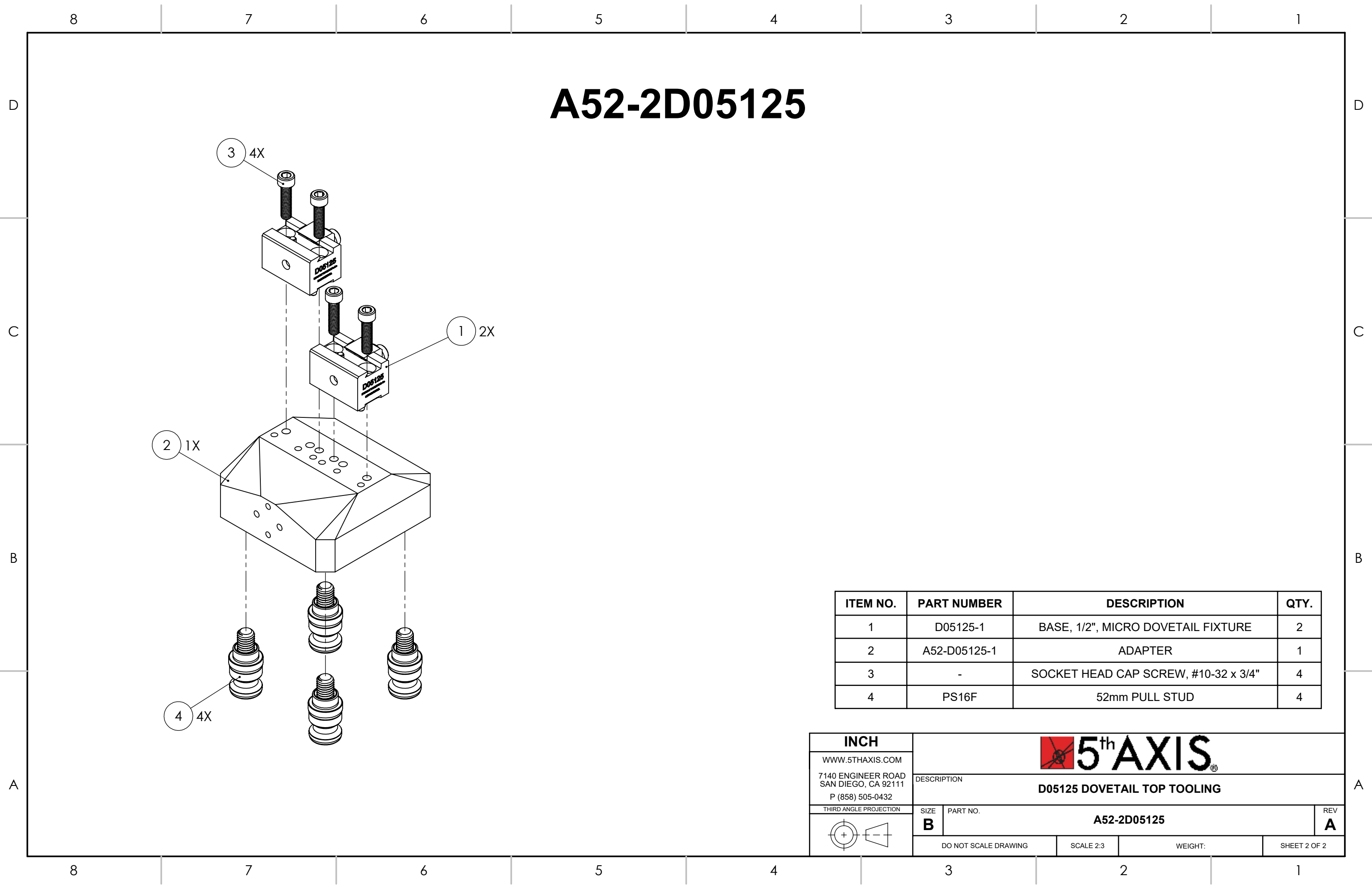
DOVETAIL  $\varnothing$   
ALIGNED WITH  
BASE  $\varnothing$



[13.5]  
.531  
TO CENTER OF  
AUTOMATION  
CLEAT MOUNT


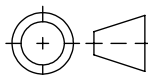
4x PS16F

|   |  |   |             |              |
|---|--|---|-------------|--------------|
| INCH  |  |  |             |              |
| WWW.5THAXIS.COM   |  |   |             |              |
| 7140 ENGINEER ROAD<br>SAN DIEGO, CA 92111<br>P (858) 505-0432                         |  | DESCRIPTION   |             |              |
|   |  | D05125 DOVETAIL TOP TOOLING   |             |              |
| THIRD ANGLE PROJECTION  |  | SIZE  | PART NO.    | REV          |
|  |  | B   | A52-2D05125 | A            |
| DO NOT SCALE DRAWING  |  | SCALE 1:1   | WEIGHT:     | SHEET 1 OF 2 |



# A52-2D05125

| ITEM NO. | PART NUMBER  | DESCRIPTION                          | QTY. |
|----------|--------------|--------------------------------------|------|
| 1        | D05125-1     | BASE, 1/2", MICRO DOVETAIL FIXTURE   | 2    |
| 2        | A52-D05125-1 | ADAPTER                              | 1    |
| 3        | -            | SOCKET HEAD CAP SCREW, #10-32 x 3/4" | 4    |
| 4        | PS16F        | 52mm PULL STUD                       | 4    |

|   |  |   |             |              |
|---|--|---|-------------|--------------|
| INCH  |  |  5 <sup>th</sup> AXIS® |             |              |
| WWW.5THAXIS.COM   |  |   |             |              |
| 7140 ENGINEER ROAD<br>SAN DIEGO, CA 92111<br>P (858) 505-0432                         |  | DESCRIPTION   |             |              |
|   |  | D05125 DOVETAIL TOP TOOLING   |             |              |
| THIRD ANGLE PROJECTION  |  | SIZE  | PART NO.    | REV          |
|  |  | B   | A52-2D05125 | A            |
| DO NOT SCALE DRAWING  |  | SCALE 2:3   | WEIGHT:     | SHEET 2 OF 2 |