
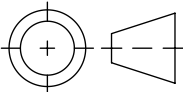
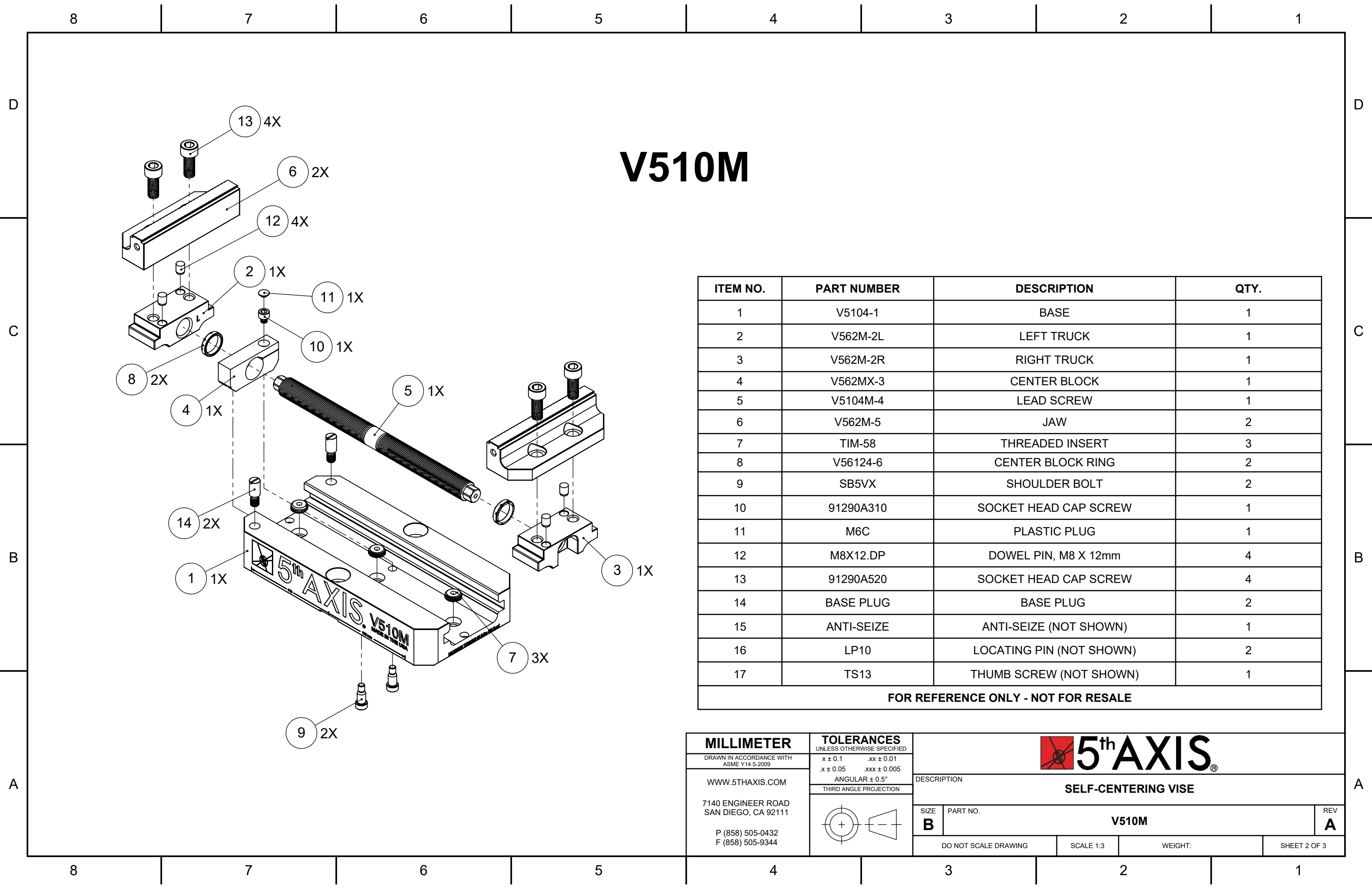


MILLIMETER		TOLERANCES UNLESS OTHERWISE SPECIFIED		 5 <sup>th</sup> AXIS <sup>®</sup>			
DRAWN IN ACCORDANCE WITH ASME Y14.5-2009		x ± 0.1	.xx ± 0.01	DESCRIPTION  SELF-CENTERING VISE			
WWW.5THAXIS.COM		.x ± 0.05	.xxx ± 0.005				
7140 ENGINEER ROAD SAN DIEGO, CA 92111		ANGULAR ± 0.5°		SIZE <b>B</b>			
P (858) 505-0432 F (858) 505-9344		THIRD ANGLE PROJECTION					
				PART NO.		REV <b>A</b>	
				<b>V510M</b>			
				DO NOT SCALE DRAWING		SCALE 1:3	
				WEIGHT:		SHEET 1 OF 3	



# V510M

ITEM NO.	PART NUMBER	DESCRIPTION	QTY.
1	V5104-1	BASE	1
2	V562M-2L	LEFT TRUCK	1
3	V562M-2R	RIGHT TRUCK	1
4	V562MX-3	CENTER BLOCK	1
5	V5104M-4	LEAD SCREW	1
6	V562M-5	JAW	2
7	TIM-58	THREADED INSERT	3
8	V56124-6	CENTER BLOCK RING	2
9	SB5VX	SHOULDER BOLT	2
10	91290A310	SOCKET HEAD CAP SCREW	1
11	M6C	PLASTIC PLUG	1
12	M8X12.DP	DOWEL PIN, M8 X 12mm	4
13	91290A520	SOCKET HEAD CAP SCREW	4
14	BASE PLUG	BASE PLUG	2
15	ANTI-SEIZE	ANTI-SEIZE (NOT SHOWN)	1
16	LP10	LOCATING PIN (NOT SHOWN)	2
17	TS13	THUMB SCREW (NOT SHOWN)	1
FOR REFERENCE ONLY - NOT FOR RESALE			

MILLIMETER

DRAWN IN ACCORDANCE WITH  
ASME Y14.5-2009

WWW.5THAXIS.COM

7140 ENGINEER ROAD  
SAN DIEGO, CA 92111

P (858) 505-0432  
F (858) 505-9344

TOLERANCES  
UNLESS OTHERWISE SPECIFIED

x ± 0.1

.xx ± 0.01

.x ± 0.05

.xxx ± 0.005

ANGULAR ± 0.5°

THIRD ANGLE PROJECTION

DESCRIPTION

SELF-CENTERING VISE

SIZE

B

PART NO.

V510M

REV

A

DO NOT SCALE DRAWING

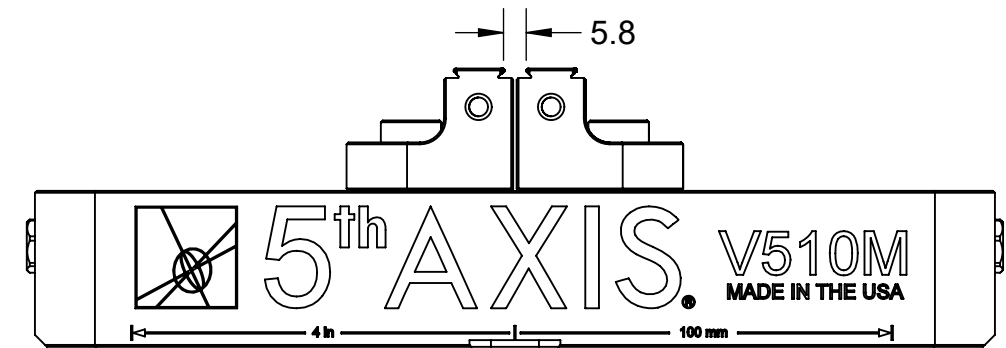
SCALE 1:3

WEIGHT:

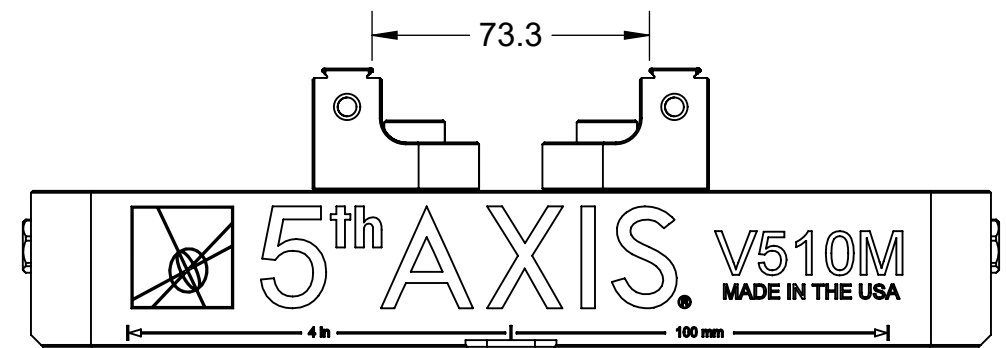
SHEET 2 OF 3

**NOTE:** USING DOVETAIL ALLOWS VISE TO CLAMP LARGER PART.  
BELOW CLAMPING RANGE ONLY SHOWS THE CAPABILITY OF THE GRIPPER TEETH.

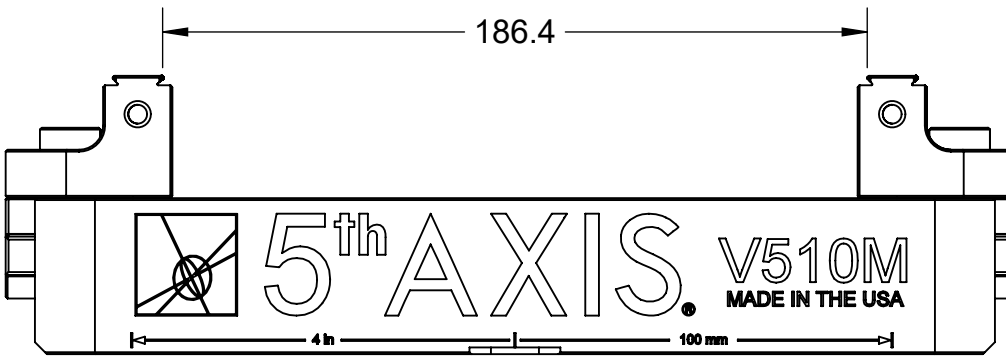
# V510M



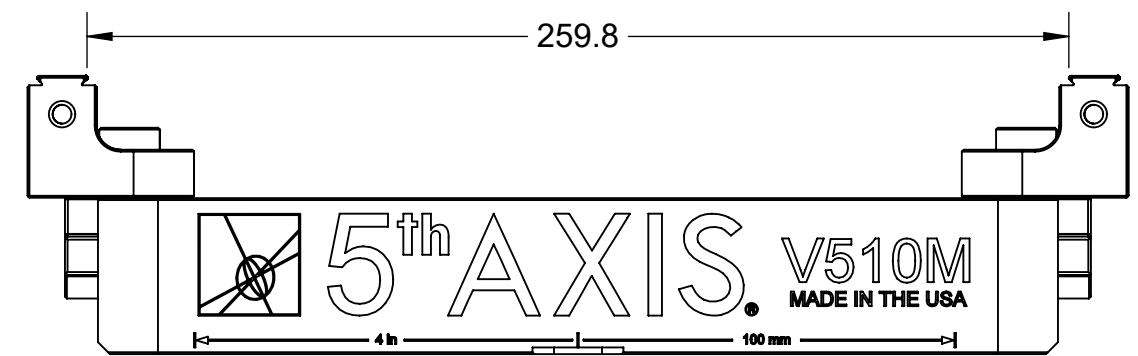
FORWARD JAWS (MINIMUM CLAMPING RANGE)




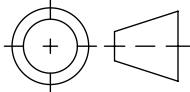
REVERSE JAWS (MINIMUM CLAMPING RANGE)



FORWARD JAWS (MAXIMUM CLAMPING RANGE)



REVERSE JAWS (MAXIMUM CLAMPING RANGE)

MILLIMETER <small>DRAWN IN ACCORDANCE WITH ASME Y14.5-2009</small>	TOLERANCES <small>UNLESS OTHERWISE SPECIFIED</small>		 <b>5<sup>th</sup> AXIS</b> ®			
	<small>x ± 0.1      .xx ± 0.01 .x ± 0.05      .xxx ± 0.005 ANGULAR ± 0.5°</small>		DESCRIPTION <b>SELF-CENTERING VISE</b>			
	THIRD ANGLE PROJECTION 		SIZE <b>B</b>	PART NO. <b>V510M</b>		REV <b>A</b>
	7140 ENGINEER ROAD SAN DIEGO, CA 92111  P (858) 505-0432 F (858) 505-9344		DO NOT SCALE DRAWING		SCALE 1:2	WEIGHT: SHEET 3 OF 3